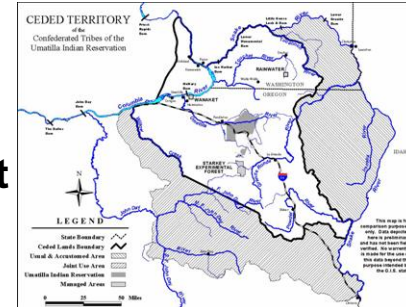




Confederated Tribes of the Umatilla Indian Reservation DNR Fisheries Program Project Semiannual Report Project: Ceded Area Tributary Culvert/Passage Project

Period: January - June 2009



Project Statement/Goal: Protect, enhance, and restore functional floodplain, channel, and watershed processes to provide sustainable and healthy habitat for aquatic species of the First Food order.

Project Objectives: Design, implement, and maintain passage for important aquatic species by: 1) Identify and prioritize passage barriers in the NF John Day Subbasin for 2010 and 2011 2) develop project partnership agreements, 3) Plan, design and prepare projects for 2009 implementation.

Project Inputs:	Funding	09 Budget	Total Staff	New 2009 Staff
	BPA	\$250,000	2 bios; 1 tech	None
	Eco-trust	\$60,000		

Outputs:

- Coordination with cooperators to reschedule implementation in 2010 after implementation contracts were not able to be completed in time.
- Coordination/planning to address passage problems on Beaver Creek.

Outcomes:

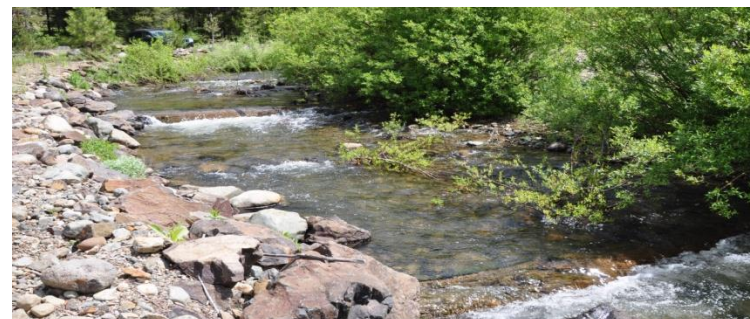
- Rescheduled funding into 2010 and secured funding extension to implementation for the Battle and Granite Creek culvert replacements.
- Rescheduled the Bruin and Sponge Creek Culvert replacements into 2011.
- Identified necessary time lines required for successful implementation; including preparing and identifying agreements necessary for funding reimbursement and contracts
- Secured a final design to restore summer flows through Beaver Creek .
- Sourced materials necessary to restore flows to Beaver Creek.

Impacts:

- Contribute to achievement of DNR ecological (river vision) & first food mission statements, Subbasin Plan and ESA Draft Recovery Plan
- Assist in recovery of Endangered Species Act subject species (spring/summer chinook, summer steelhead, bull trout)
- Address water quality limiting factors as per Clean Water Act 303d list



Undersized culvert on Battle Creek



The site on Beaver Creek that annually dries out as water enters the substrate