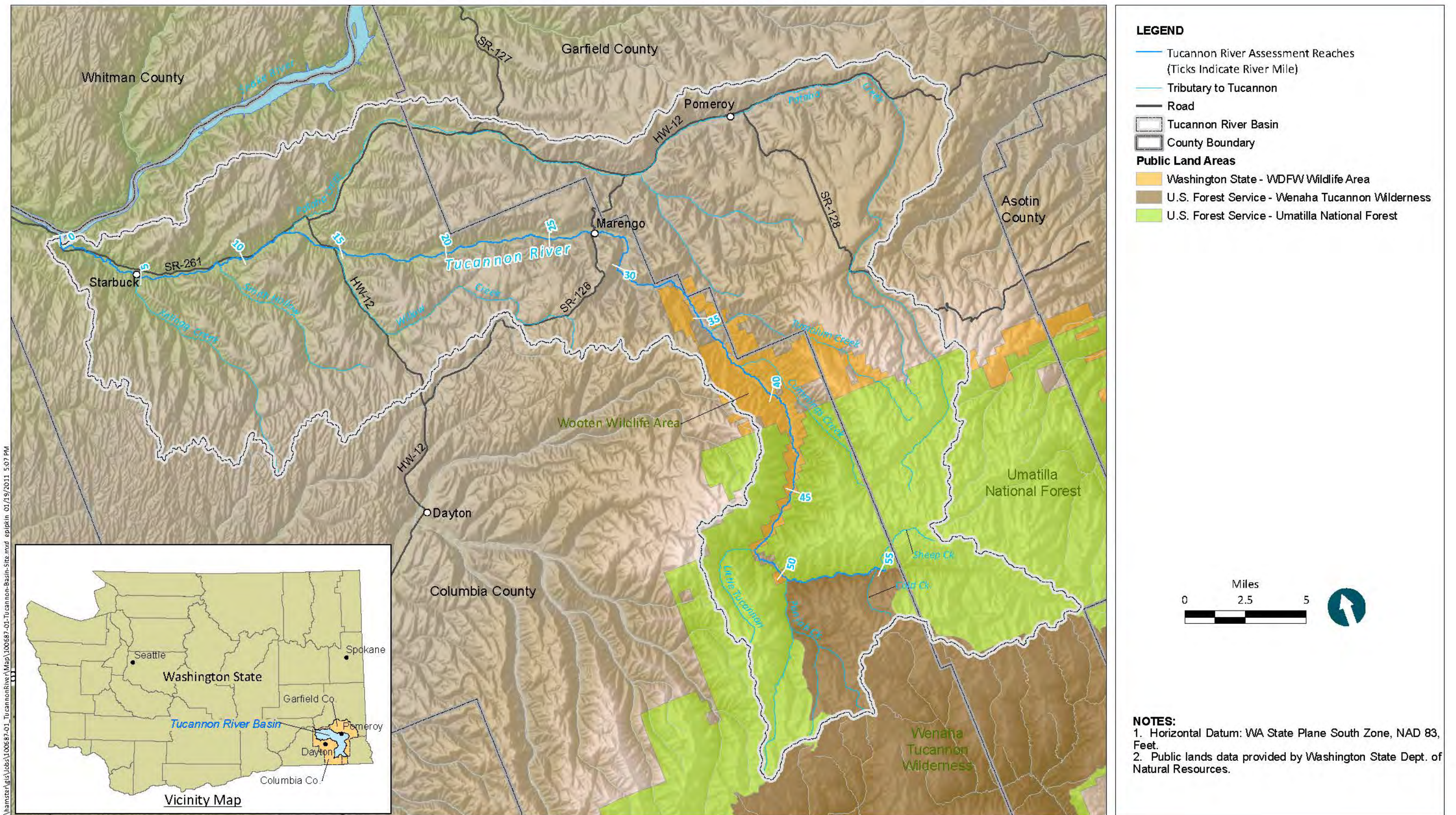


## FIGURES

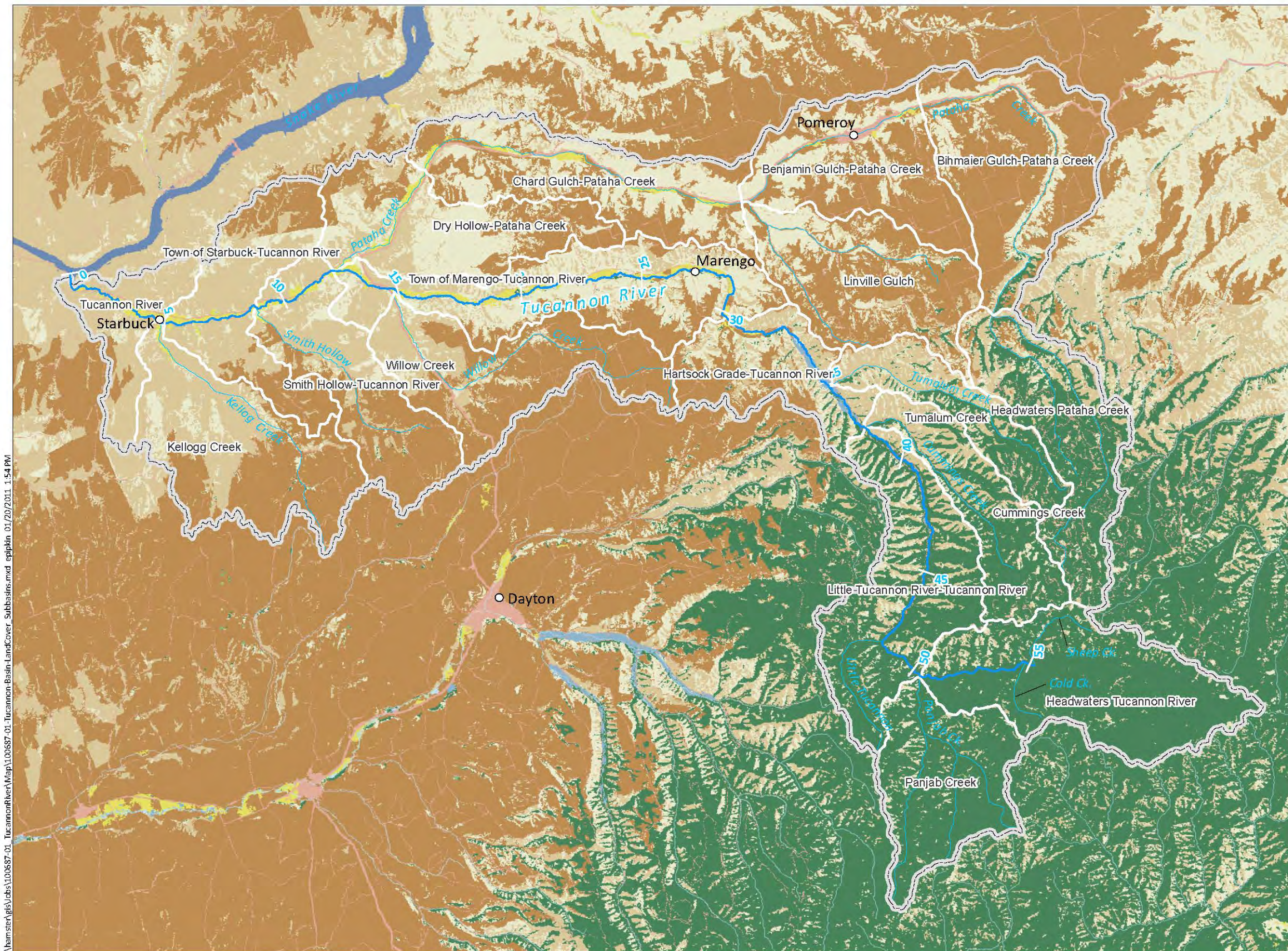
---





**Figure 1**  
 Basin Vicinity and Site Map  
 Tucannon River Geomorphic Assessment and Habitat Restoration Study  
 Columbia Conservation District





# LEGEND

— Tucannon River Assessment Reaches  
(Ticks Indicate River Mile)

— Tributary to Tucannon

Tucannon River Basin

Tucannon River Subbasins

## Land Cover

- Open Water
- Barren Land
- Deciduous Forest
- Evergreen Forest
- Mixed Forest
- Emergent Herbaceous Wetlands
- Woody Wetlands
- Herbaceous
- Shrub/Scrub
- Hay/Pasture
- Cultivated Crops
- Developed



## NOTES:

1. Horizontal Datum: WA State Plane South Zone, NAD 83, Feet.
2. Land use data derived from National Land Cover Database.
3. Sub-basins are based on USGS HUC areas.



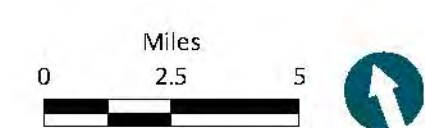


**LEGEND**

- Tucannon River Assessment Reaches (Ticks Indicate River Mile)
- Tucannon River Basin
- Tucannon River Sub-Basins (Drainage Area in Acres)
- Stream Gage
- TSS Sample Site
- 2010 Bedload Sampling Locations

**Roads**

- Highway
- Light-Duty Improved Road
- Unimproved Road
- Unknown



**NOTES:**

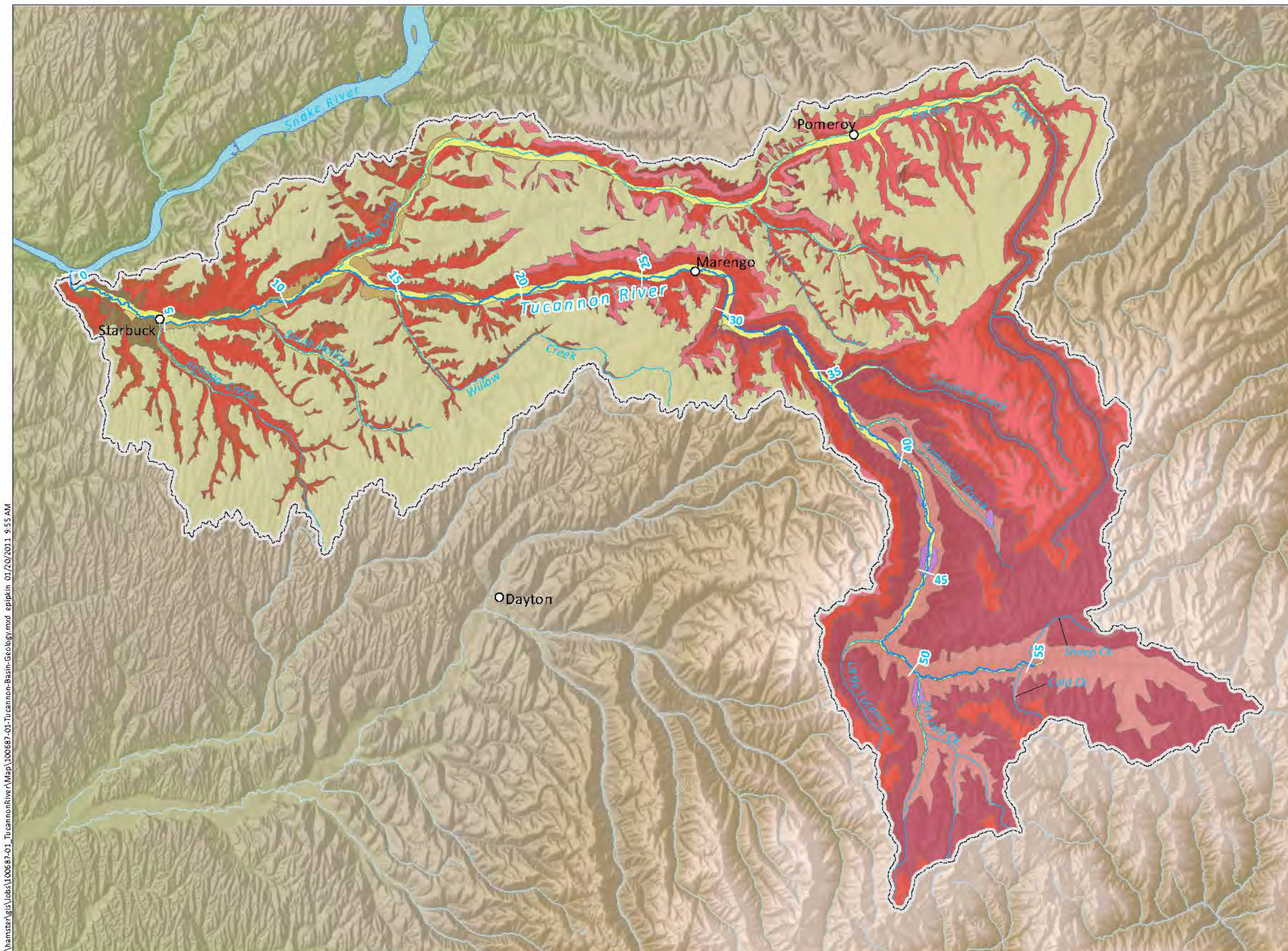
1. Horizontal Datum: WA State Plane South Zone, NAD 83, Feet.
2. Road data provided by Washington Dept. of Natural Resources.
3. Sub-basins are based on USGS HUC areas.

\\hamster\gis\jobs\100687-01\_TucannonRiver\Map\100687-01\_TucannonBasin-Sed Budget.mxd epipkin 01/20/2011 4:24 PM



**Figure 3**  
Subbasin Areas, Stream Gages, and Sediment Sampling Sites  
Tucannon River Geomorphic Assessment and Habitat Restoration Study  
Columbia Conservation District





# LEGEND

Tucannon River Assessment Reaches  
(Ticks Indicate River Mile)

Tributary to Tucannon

Tucannon River Basin

## Tucannon Basin Geologic Units

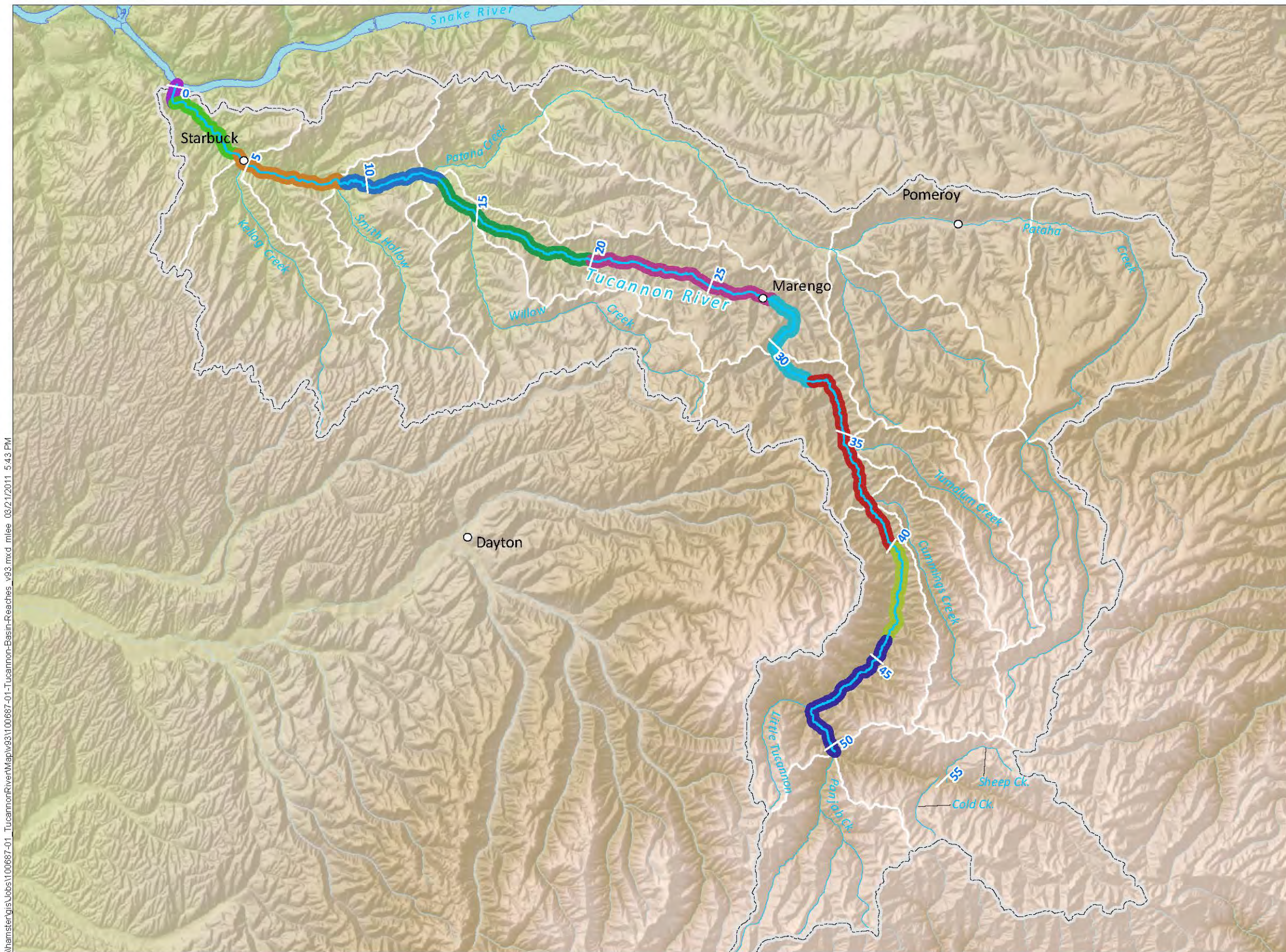
- Mv(gN1) - basalt flows (Grande Ronde, lower norm.)
- Mv(gN2) - basalt flows (Grande Ronde, upper norm.)
- Mv(gR2) - basalt flows (Grande Ronde, upper rev.)
- Mv(slm) - basalt flows (lower Saddle Mtn.)
- Mv(sp) - basalt flows (Pomona Member)
- Mv(su) - basalt flows (Umatilla Member)
- Mv(w) - basalt flows (Wanapum undiv.)
- Mv(wem) - basalt flows (Eckler Mtn.)
- Mv(wfe) - basalt flows - (Frenchman Spr. and Eckler Mtn.)
- Mv(wfs) - basalt flows (Frenchman Spr.)
- Mv(wr) - basalt flows (Roza)
- Qa - alluvium
- Qaf - alluvial fan deposits
- Qf(bg) - Bonneville flood deposits
- Qfs(t) - outburst flood deposits, sand and silt
- Ql - loess
- Qls - mass wasting deposits
- pTmt - metasedimentary and metavolcanic rocks
- Water



## NOTES:

1. Horizontal Datum: WA State Plane South Zone, NAD 83, Feet.
2. Geologic unit data provided by Washington State Dept. of Natural Resources.





# LEGEND

Tucannon River Assessment Reaches  
(Ticks Indicate River Mile)

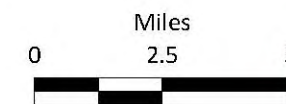
Tributary to Tucannon

Tucannon River Basin

Tucannon River Sub-Basins

## Geomorphic Reaches

- Reach 10 (R.M. 50.3 - R.M. 44.0)
- Reach 9 (R.M. 44.0 - R.M. 40.0)
- Reach 8 (R.M. 40.0 - R.M. 32.1)
- Reach 7 (R.M. 32.1 - 27.5)
- Reach 6 (R.M. 27.5 - R.M. 20.0)
- Reach 5 (R.M. 20.0 - R.M. 13.2)
- Reach 4 (R.M. 13.2 - R.M. 8.9)
- Reach 3 (R.M. 8.9 - R.M. 4.5)
- Reach 2 (R.M. 4.5 - R.M. 0.7)
- Reach 1 (R.M. 0.7 - R.M. 0.0)



## NOTES:

1. Horizontal Datum: WA State Plane South Zone, NAD 83, Feet.
2. Subbasins are based on USGS HUC basin areas.