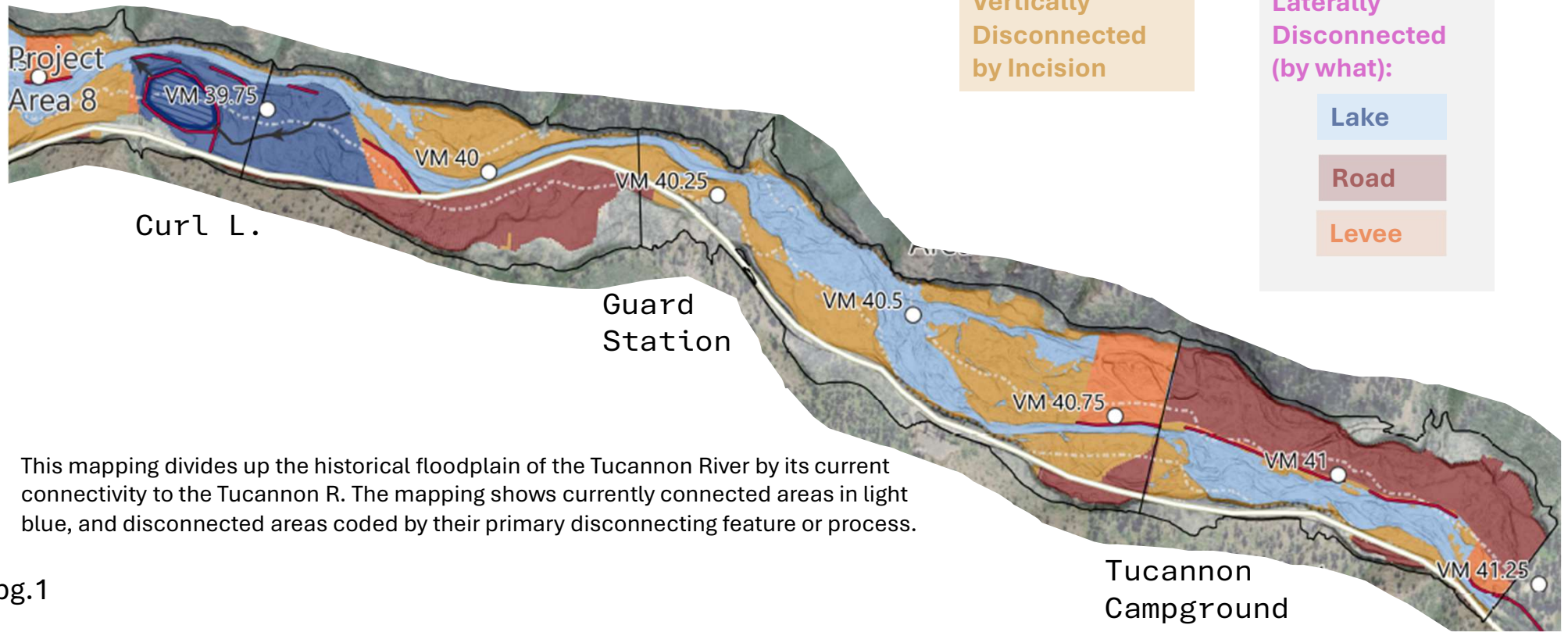
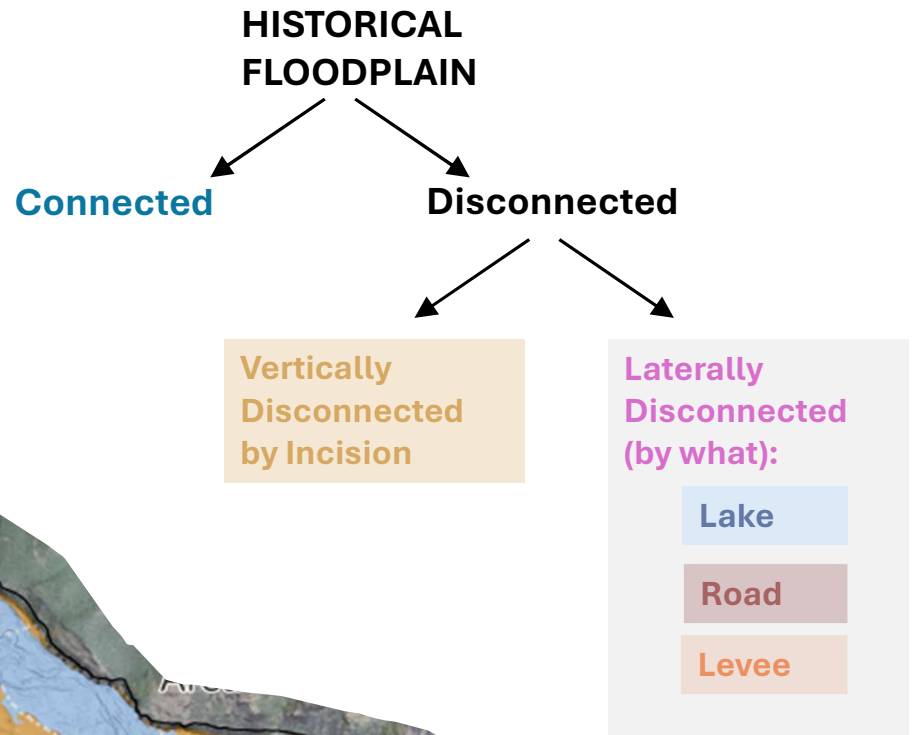


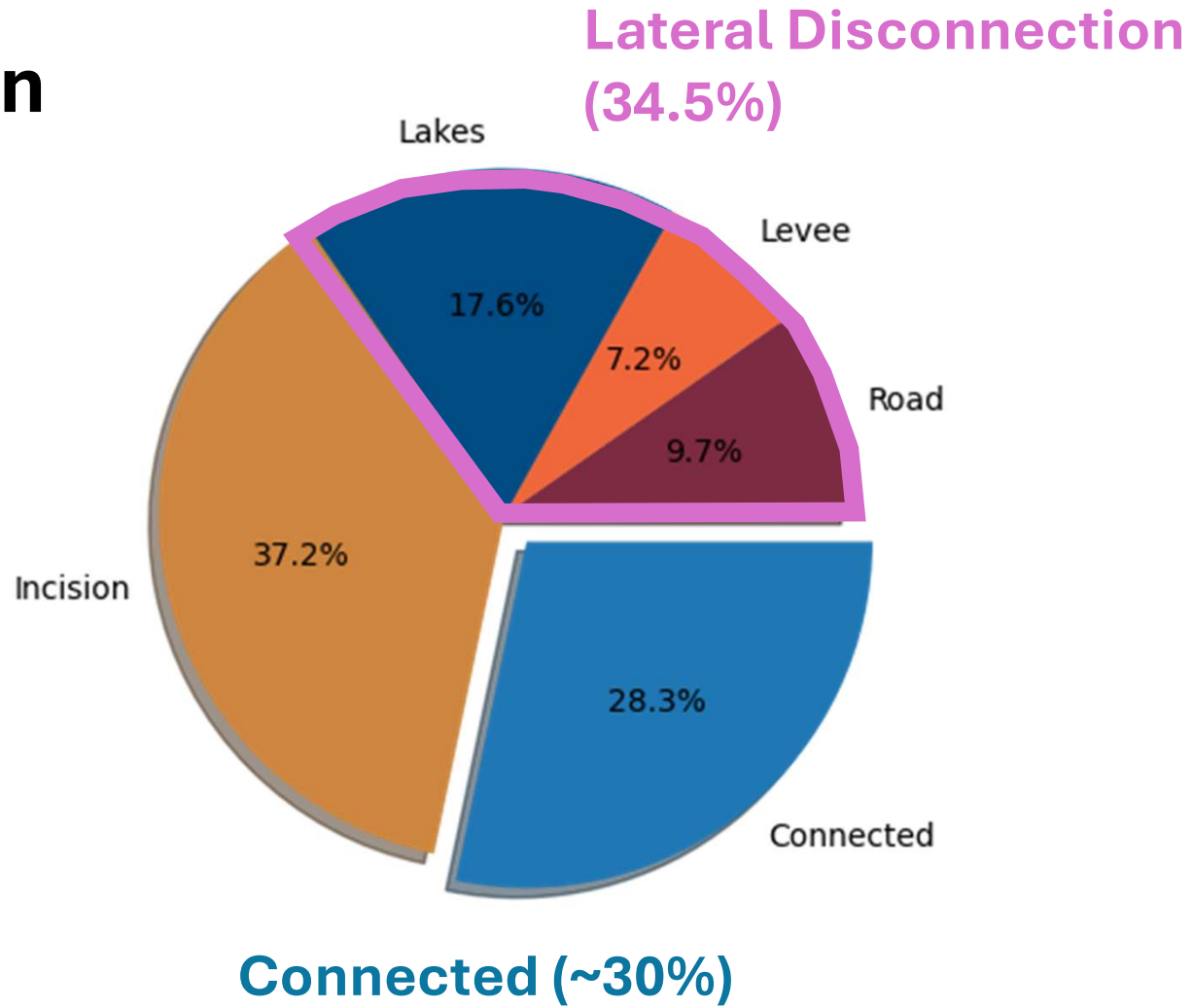
State of the Floodplain (Curl L. to Tucannon CG)



This mapping divides up the historical floodplain of the Tucannon River by its current connectivity to the Tucannon R. The mapping shows currently connected areas in light blue, and disconnected areas coded by their primary disconnecting feature or process.

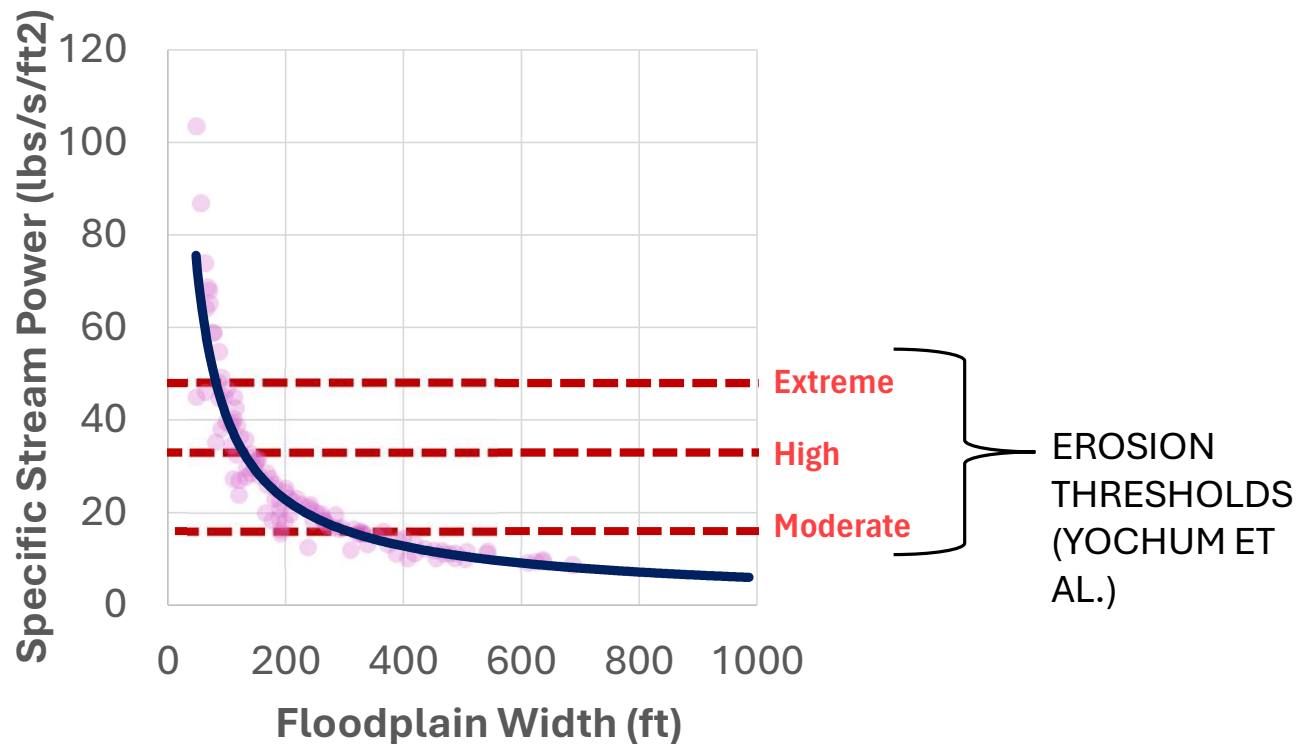
State of the Floodplain (All of PA 5-15)

**Incision
(Vertical
Disconnection)**



↑ Floodplain Width :: ↓ Erosive Energy

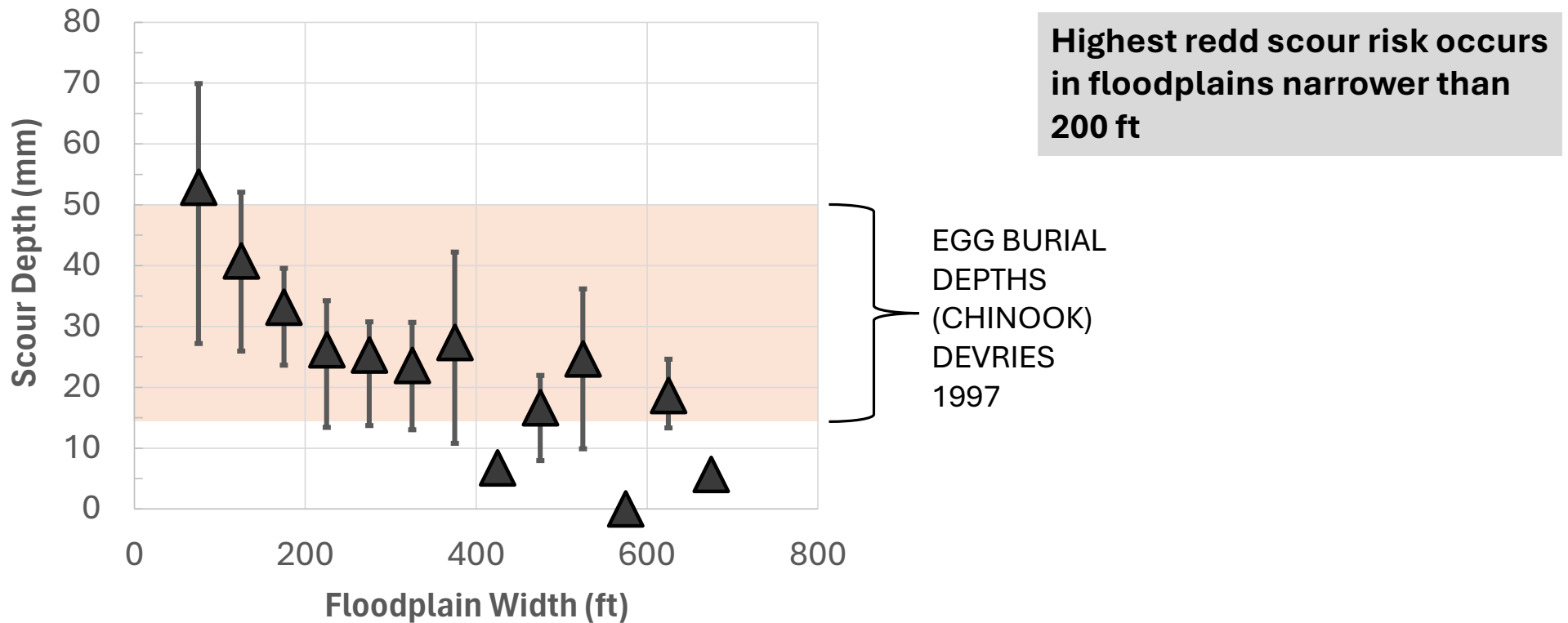
Reduced erosion has multiple benefits for ecosystem function and infrastructure resilience



Our analysis finds that a floodplain width >450 ft promotes sustainable floodplain connection (reduces incision potential)

↑ Space :: ↑ Redd Resilience

More space reduces seasonal scour depths and increases resilience of Chinook redds



Evaluating Opportunities and Benefits from Reconnecting Floodplains (widening floodplains)

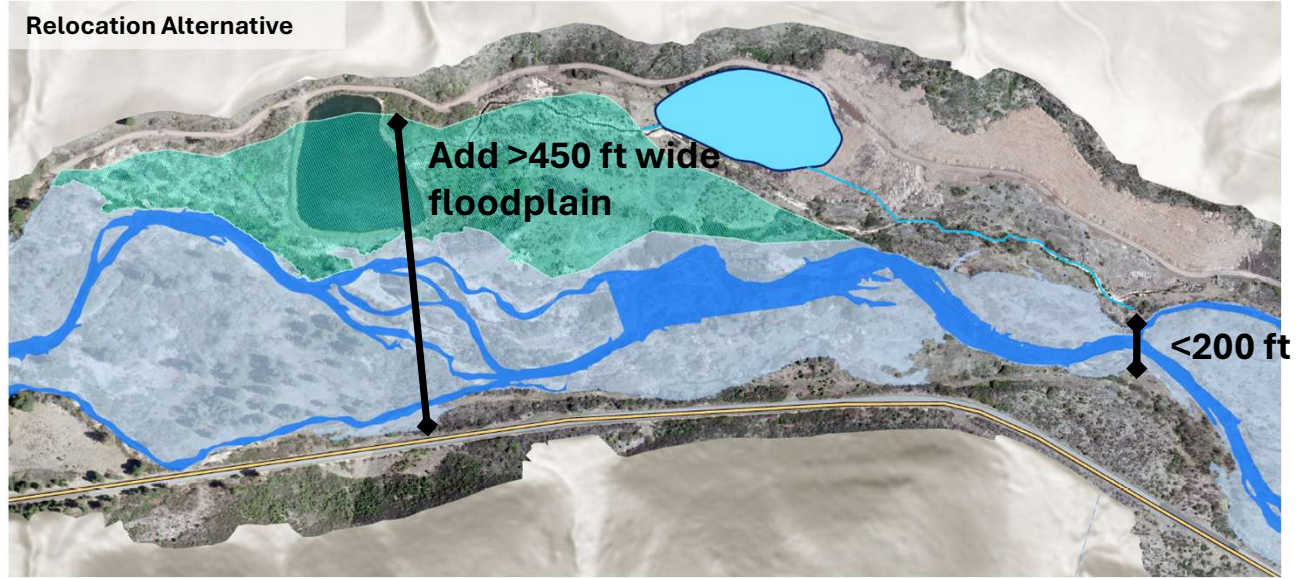
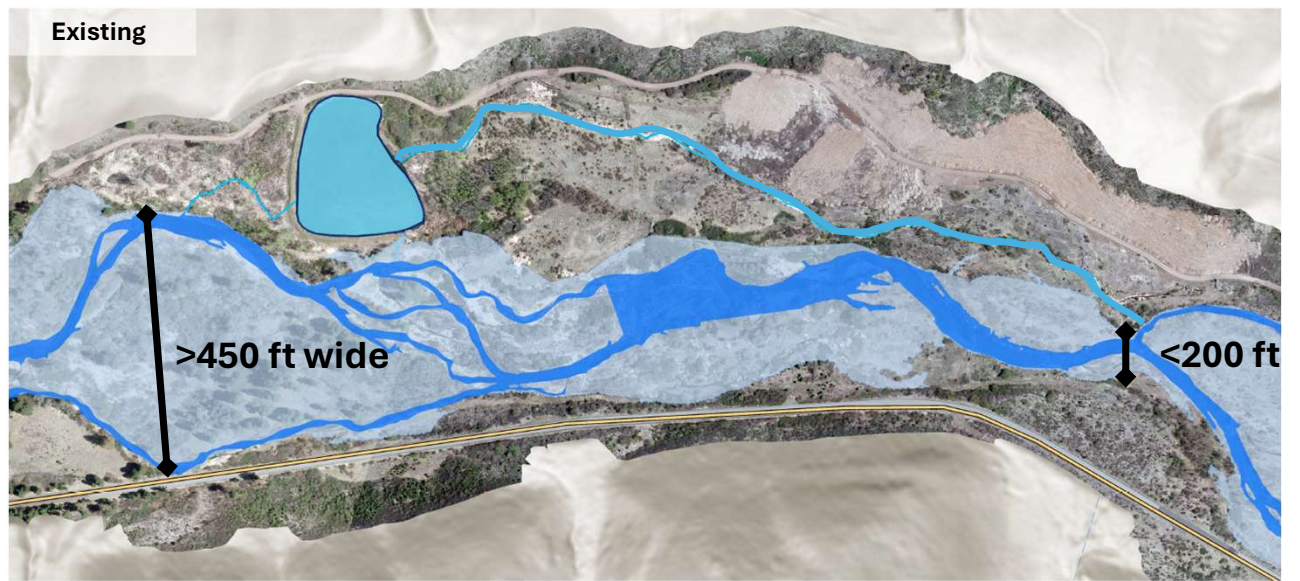
High Redd Scour Risk and Incision Potential

Reduced Redd Scour with High Incision Potential

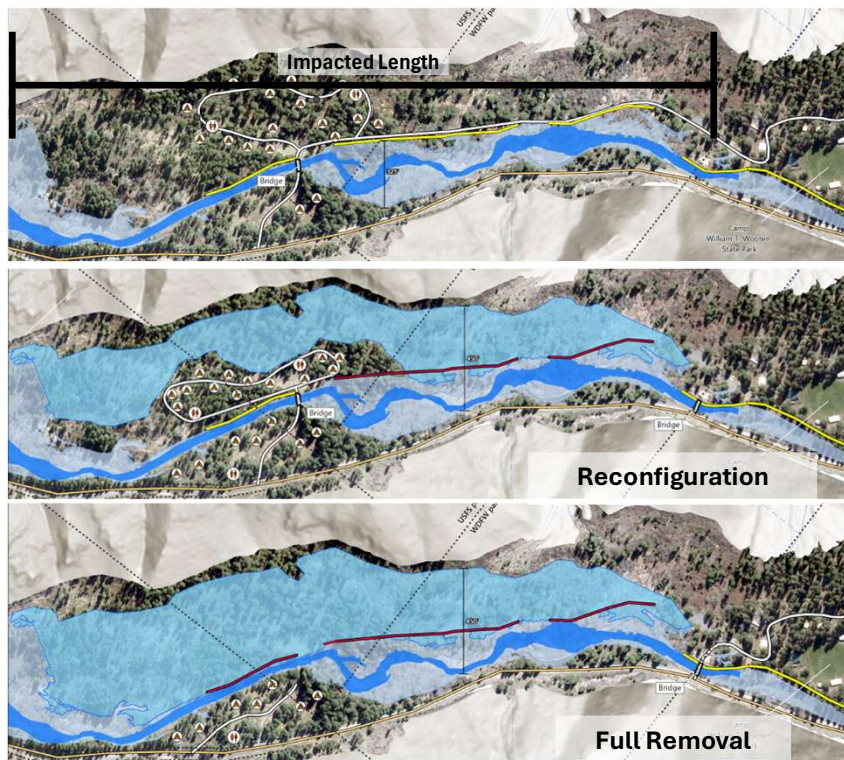
Resilient Redds and Floodplain Connectivity

200 ft

450 ft



USFS Campground Alternatives



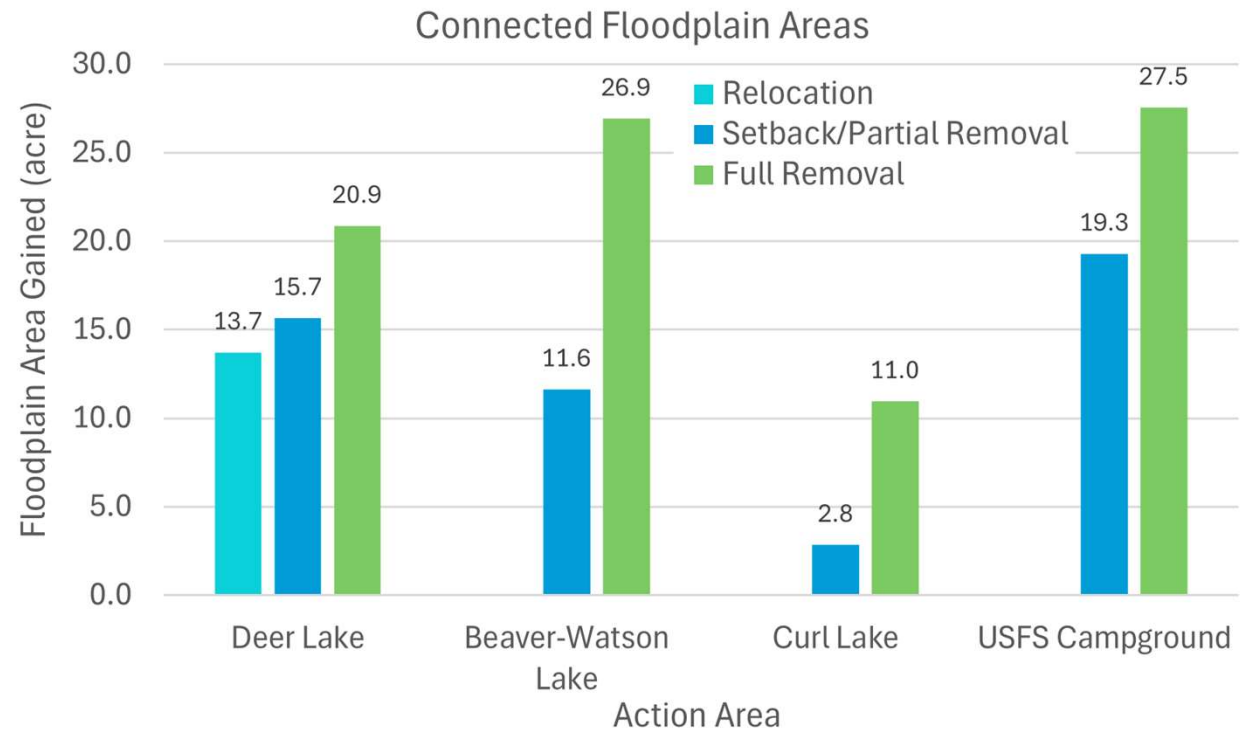
Alternative	Floodplain Acres Gained	Low Bookend Target Length >450 ft Gained (mi)	Reed Resilience Length > 200 ft Gained (mi)
Existing	18.7	500	1000
Reconfiguration	+19.3 (103%)	+1500 (300%)	+3000 (300%)
Full Removal	+ 27.5 (147%)	+2000 (400%)	+3000 (300%)

Total project length 4000 ft

Slide 6

NL1 [[@Dominique Shore](#)] My comments on slide 3 apply to this one as well.
Nick Legg, 2025-08-14T19:49:50.419

Comparing Space Benefits Across Action Areas



Comparing Space Benefits Across Action Areas

