

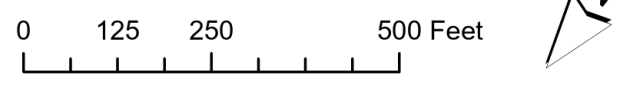


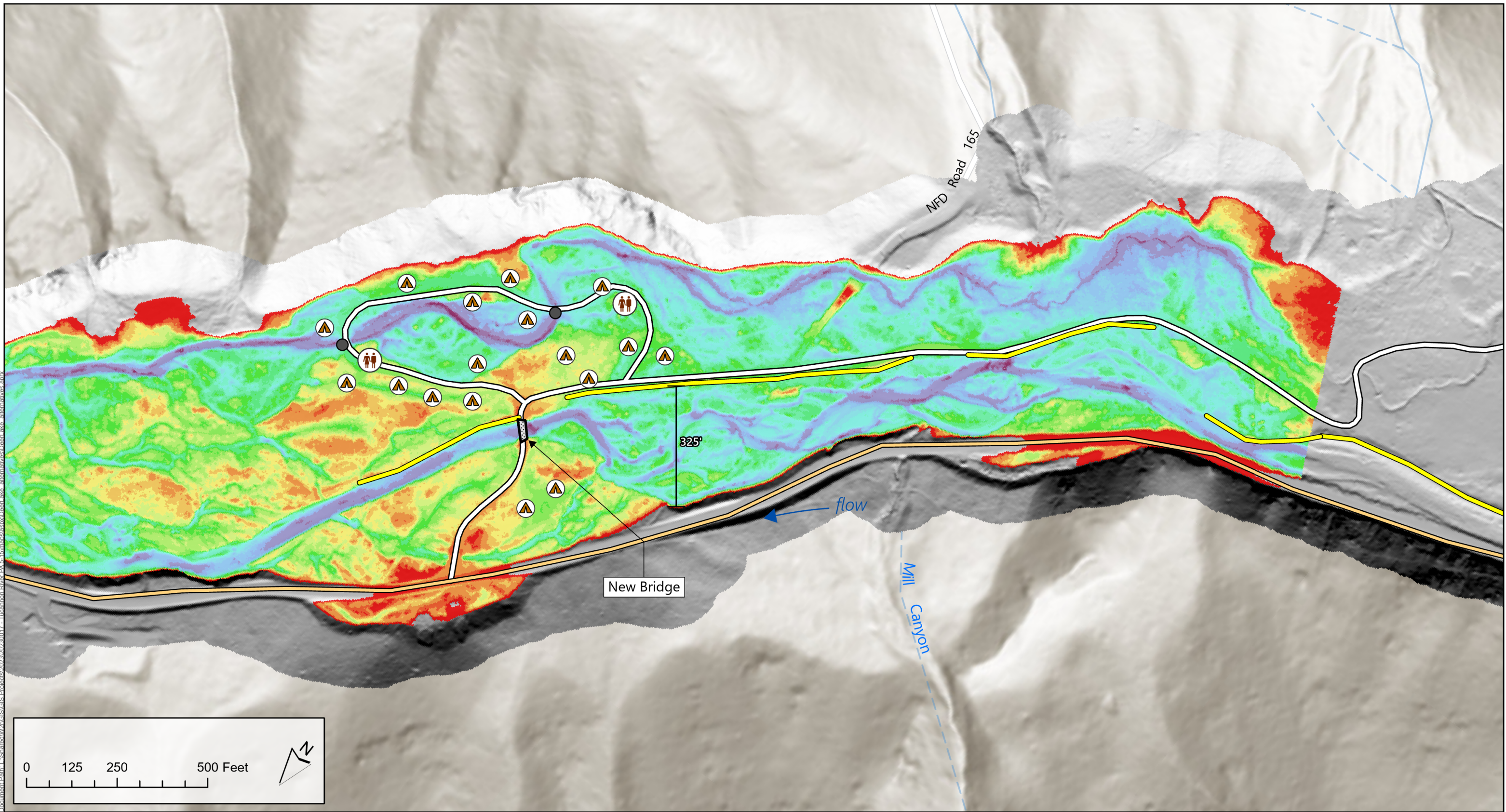
Document Path: L:\Shurest\W2\GIS\GIS Projects\2023\20230117_Tucannon River EA-15\manages\src\Parcel_aka_alternatives.aprx

Existing Conditions

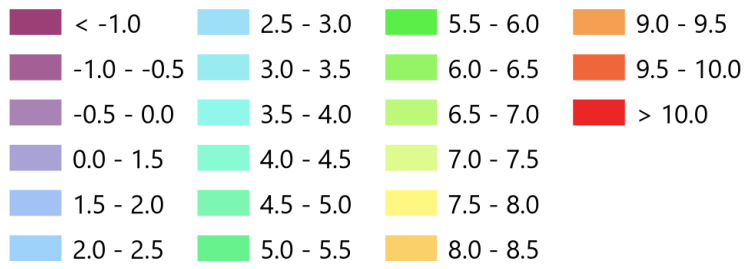
- Active floodplain
- Approximate OHW
- Levee
- Bridge
- Tax lot
- Camp access road
- Road
- ⛺ Campsite
- ♂ ♀ Restroom
- Culvert

**Tucannon Campground
Existing Conditions
Aerial Map**





Relative Elevation (ft)

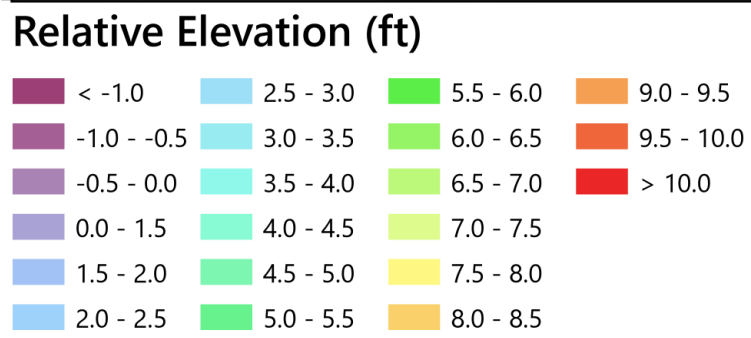
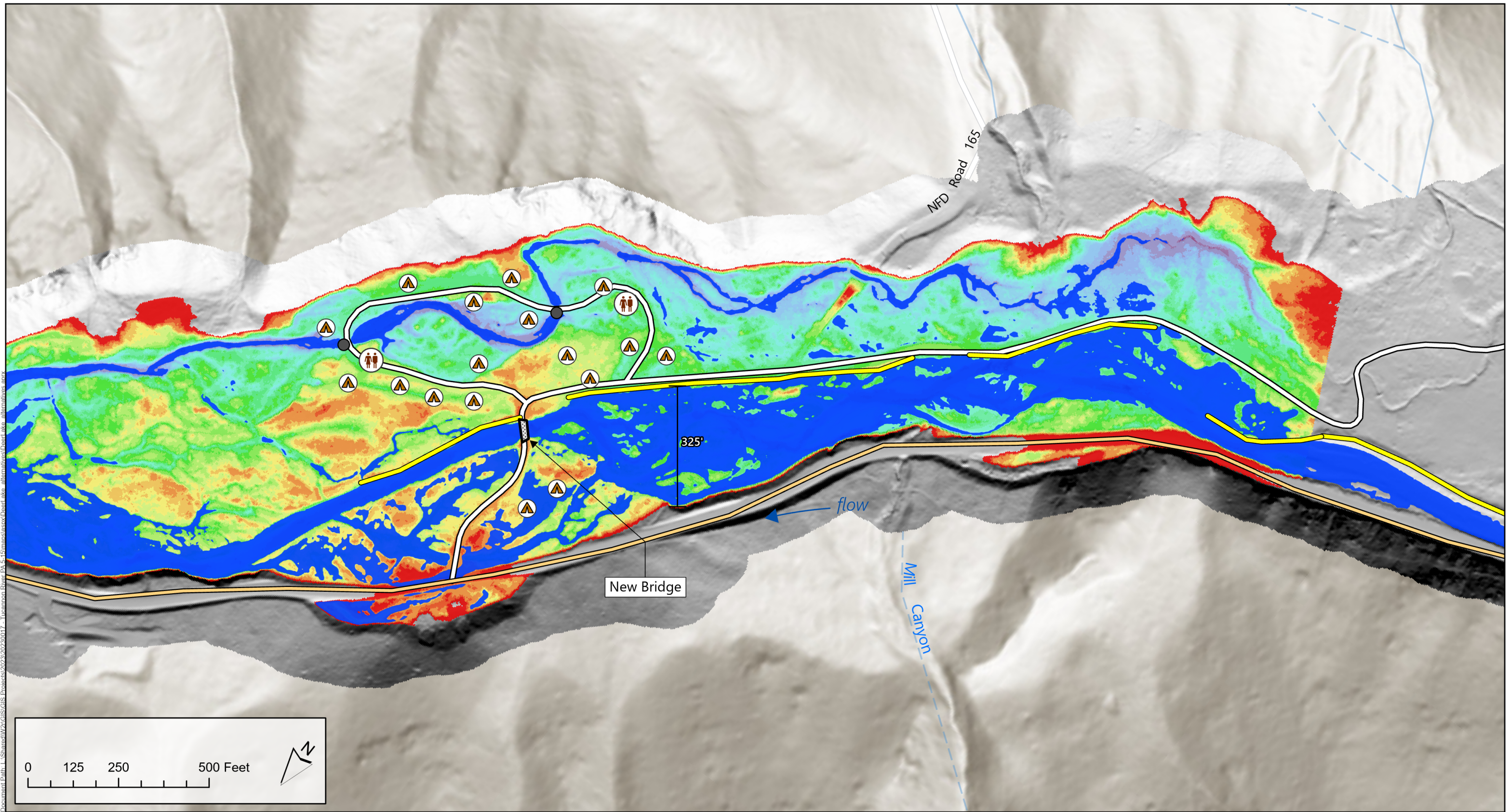


Existing Conditions



**Tucannon Campground
Existing Conditions
HAWS Map**

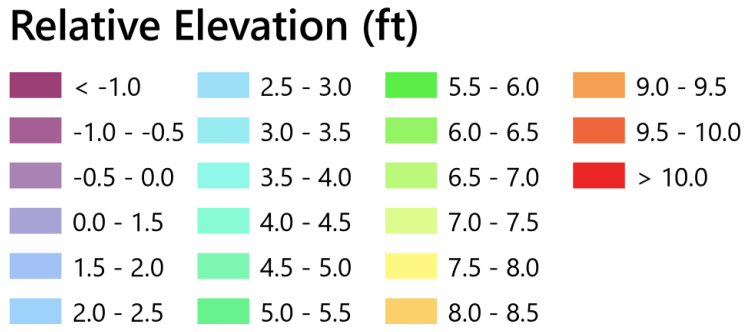
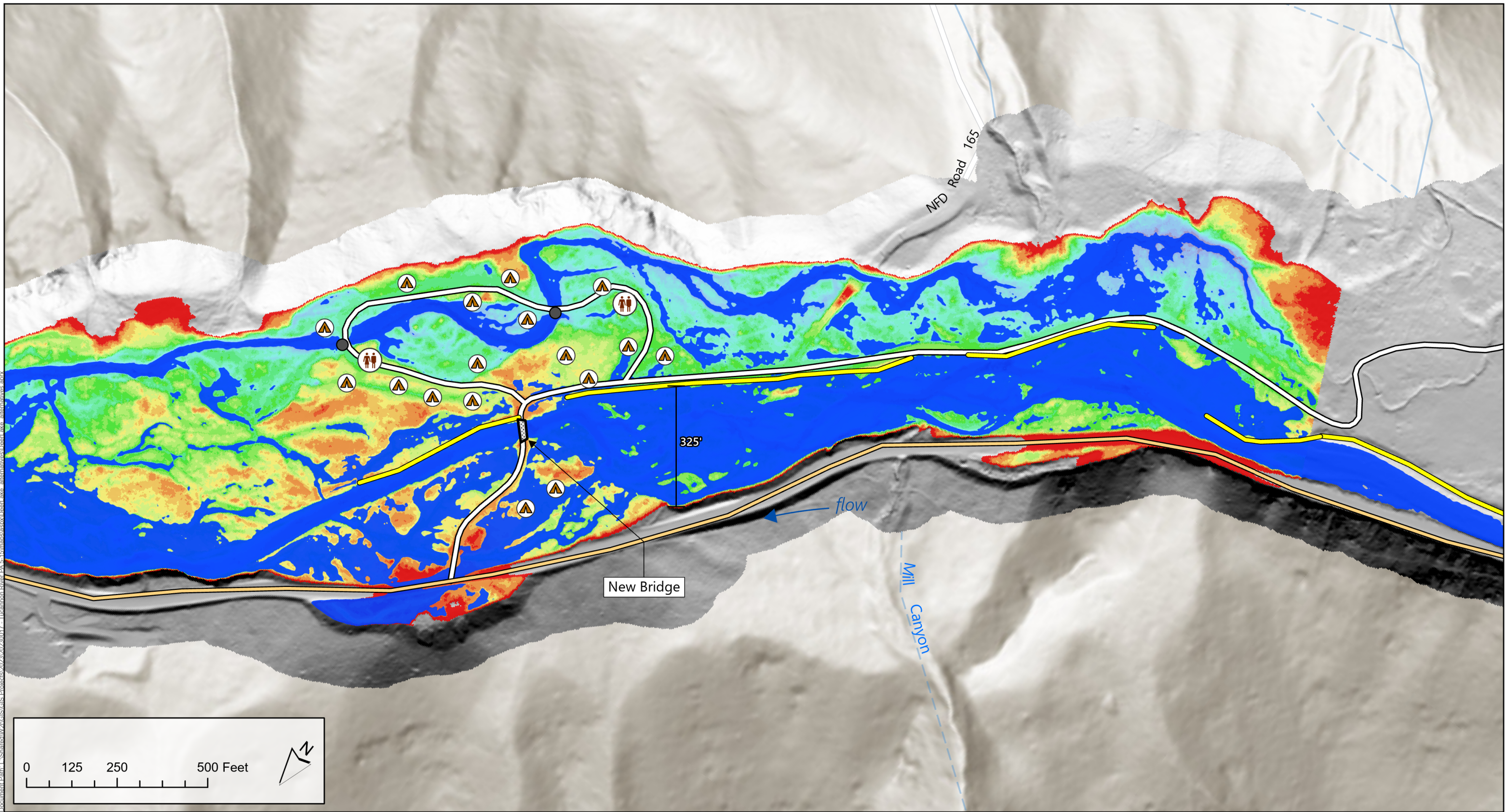




Tucannon Campground
Existing Conditions HAWS Map
Approx 5 YR Flood (1,480 cfs)

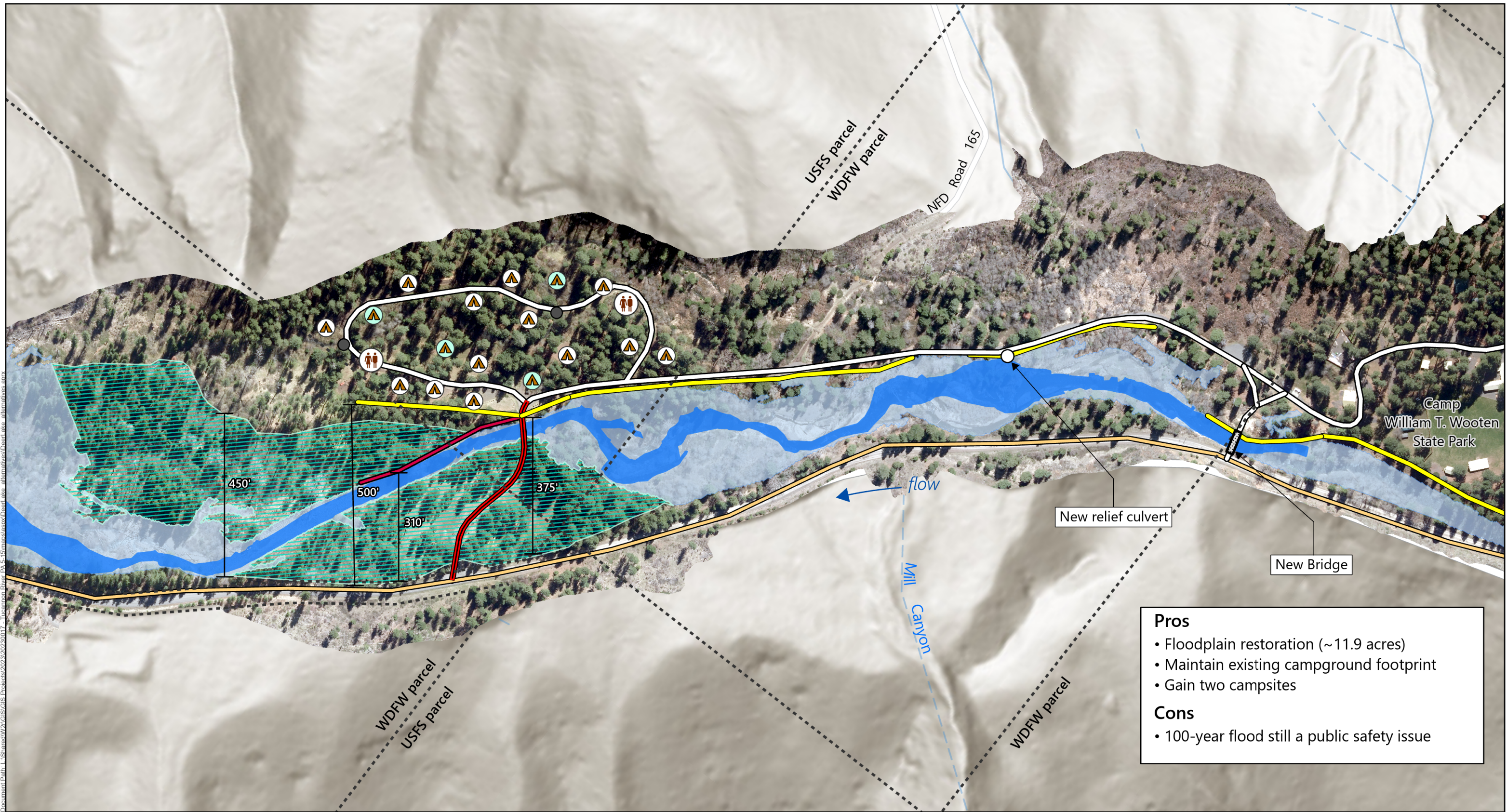


Document Path: L:\Shurew\W2\GIS\GIS\Projects\2023\20230117_TucannonRiver_EA_S-15\manuscripts\Drafts\alt\alternatives.mxd

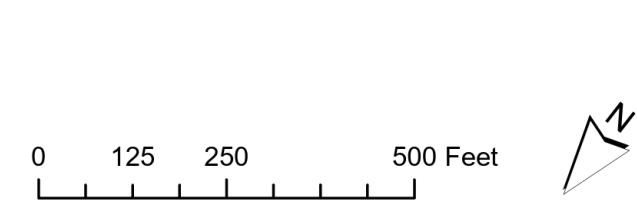


Tucannon Campground
Existing Conditions HAWS Map
Approx 10-25 YR Flood (2,276 cfs)





- Pros**
- Floodplain restoration (~11.9 acres)
 - Maintain existing campground footprint
 - Gain two campsites
- Cons**
- 100-year flood still a public safety issue

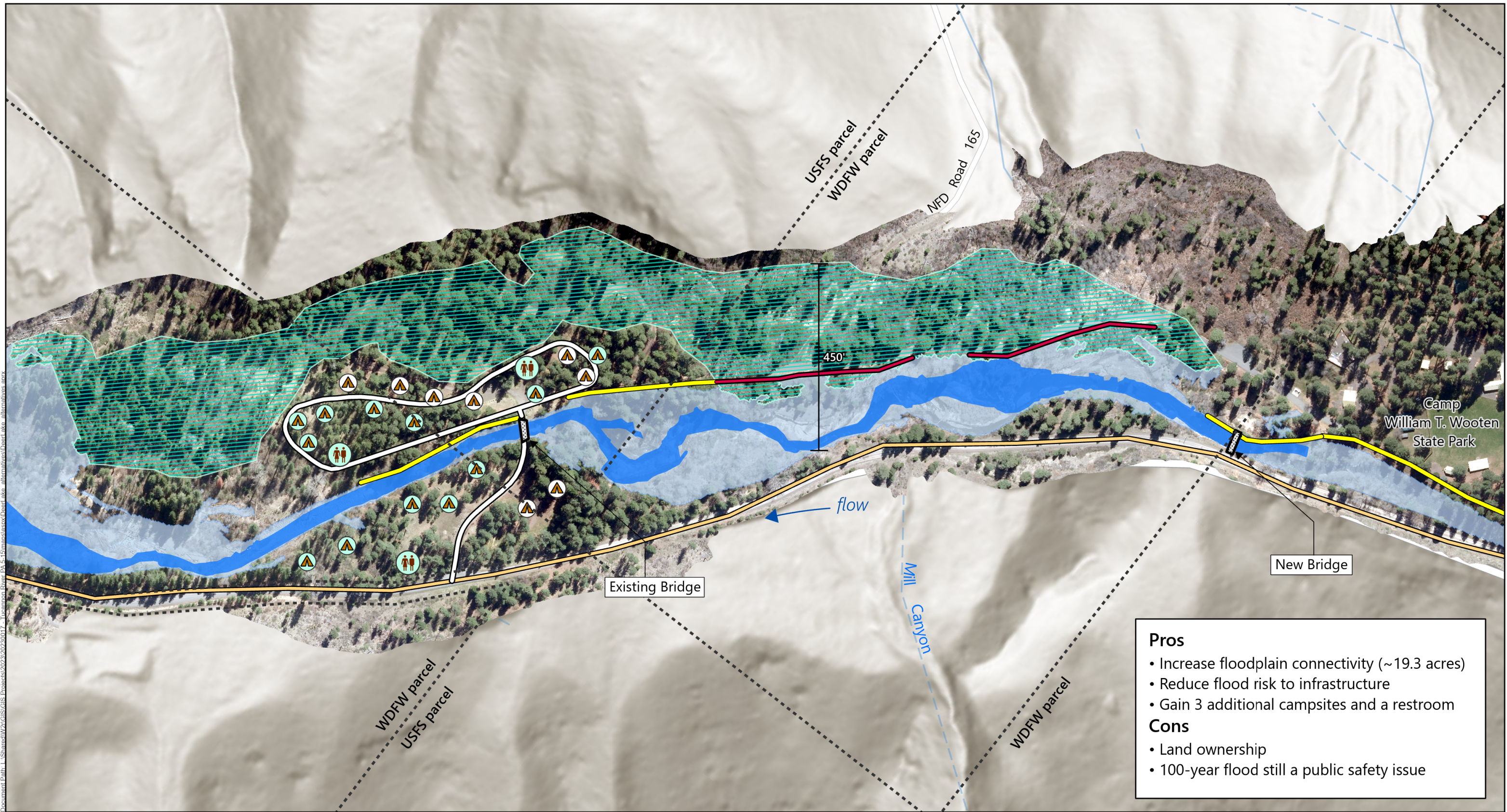


- | | | |
|----------------------------------|---------------|----------------|
| Restore floodplain (~11.9 acres) | Levee removal | Restroom |
| Approximate OHW | Road removal | Culvert |
| Active floodplain | Levee | Relief culvert |
| Tax lot | New campsite | |
| Camp access road | Campsite | |

Tucannon Campground Alternative 1

Remove access road to Tucannon Campgrounds and reconnect floodplain. Reconfigure levees. Relocate Tucannon campground bridge to a location near Camp William T. Wooten State Park.





Pros

- Increase floodplain connectivity (~19.3 acres)
- Reduce flood risk to infrastructure
- Gain 3 additional campsites and a restroom

Cons

- Land ownership
- 100-year flood still a public safety issue

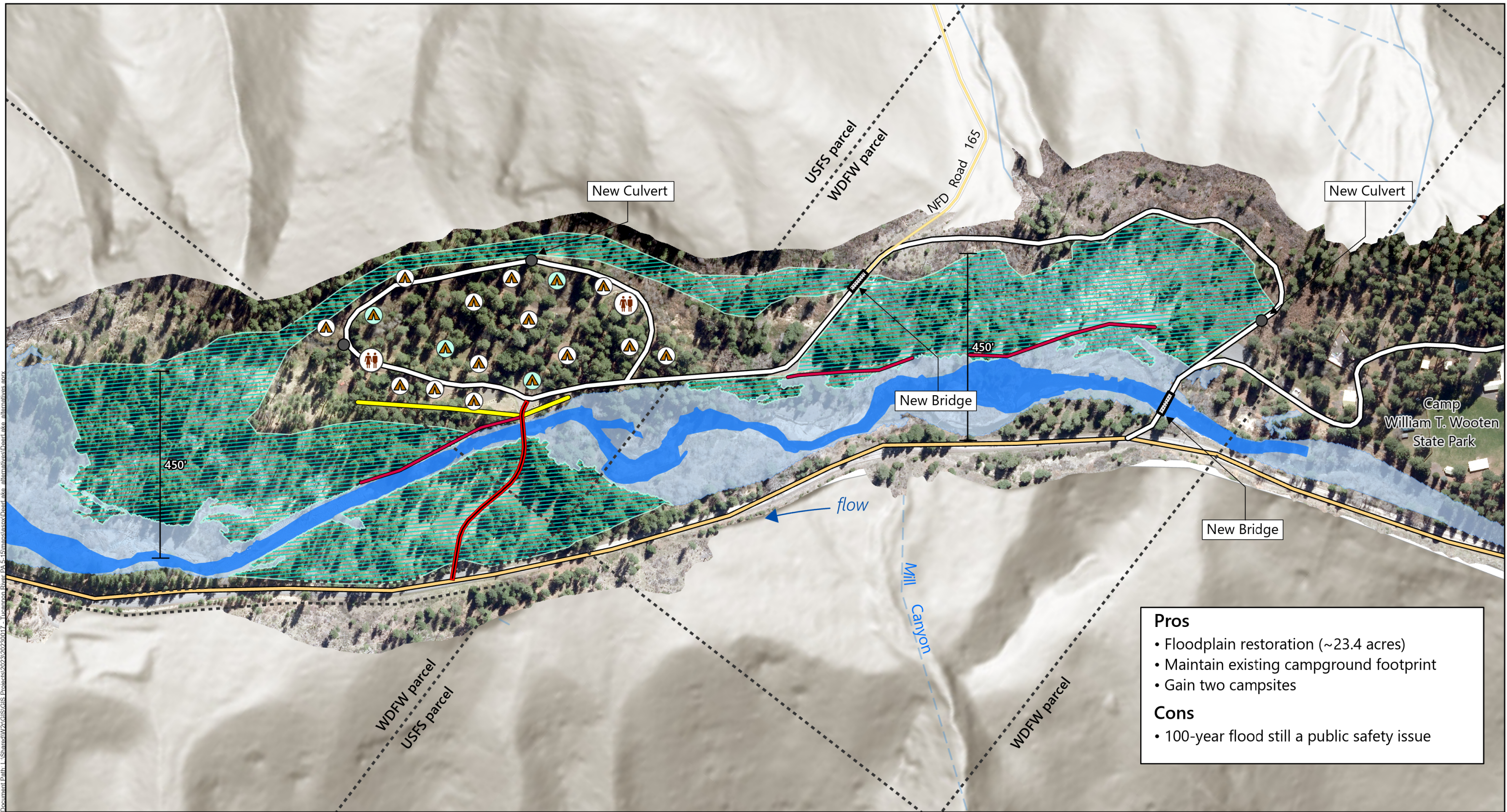
- | | | |
|----------------------------------|------------------|--------------|
| Restore floodplain (~19.3 acres) | Camp access road | New restroom |
| Approximate OHW | Existing levee | Campsite |
| Active floodplain | Levee removal | Restroom |
| Tax lot | New campsite | Culvert |

Tucannon Campground Alternative 2 Aerial

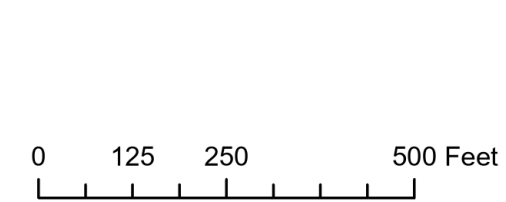
Reconfigure campsites, access road, restrooms, and levees. Add new bridge near Camp William T. Wooten State Park.



Document Path: L:\Shurest\W2\GIS\GIS Projects\2023\20230117_Tucannon River EA 5-10\managescript\Parcel_aka_alternatives.aprx



- Pros**
- Floodplain restoration (~23.4 acres)
 - Maintain existing campground footprint
 - Gain two campsites
- Cons**
- 100-year flood still a public safety issue



- Restore floodplain (~23.4 acres)
- Approximate OHW
- Active floodplain
- Tax lot
- Camp access road
- Existing levee
- Levee removal
- Road removal
- Service road
- New campsite

- Campsite
- Restroom
- Culvert

Tucannon Campground Alternative 4

Remove access road and bridge to Tucannon Campgrounds. Reconfigure campground loop road and levees. Install new access road and a bridge near Camp William T. Wooten State Park and along NFD Road 165.



The table below provides a comparative evaluation of four restoration alternatives for the Tucannon Campground. Each alternative is assessed against key criteria including infrastructure resilience, fish habitat benefits, public safety, floodplain connectivity, flood risk, and land ownership issues. Ratings of *High*, *Medium*, or *Low* indicate the relative performance of each alternative in addressing these factors. This comparison is intended to support decision-making by highlighting tradeoffs among alternatives in terms of ecological benefits, community safety, and implementation feasibility.

	Tucannon Campground Alternative Benefit Comparisons				
	Infrastructure Resilience	Fish Habitat Benefits	Public Safety	FP Connectivity	Flood Risk
Alternative 1	Low	Low	Low	Low	Low
Alternative 2	Medium	Medium	Medium	Medium	Medium
Alternative 3	High	High	High	High	High
Alternative 4	Medium	Medium	Medium	Medium-High	Medium

The relative rankings refer to relative benefit to each category ie:

Low = not much benefit

High = significant benefit

Example – Low in the Flood Risk column means low benefit to the alternative, flood risks remain high...