

## Table of Contents- Tucannon Big Four Hydraulic Modeling Analysis

Figure List	Page
Comparison Between Existing and Proposed Conditions Depth (feet)- Summer Flow	3
Comparison Between Existing and Proposed Conditions Depth (feet)- Winter Flow	4
Comparison Between Existing and Proposed Conditions Depth (feet)- 2 Year Flow (from Anchor report)	5
Comparison Between Existing and Proposed Conditions Depth (feet)- 2 Year Flow (from Streamstats)	6
Comparison Between Existing and Proposed Conditions Depth (feet)- 25 Year Flow	7
Comparison Between Existing and Proposed Conditions Depth (feet)- 100 Year Flow	8
Existing Conditions Depth (ft) - 25 Year Flow (u/s extent)	9
Proposed Conditions Depth (ft) - 25 Year Flow (u/s extent)	10
Existing Conditions Velocity (ft/s)- Summer Flow	11
Proposed Conditions Velocity (ft/s)- Summer Flow	12
Existing Conditions Velocity (ft/s)- Winter Flow	13
Proposed Conditions Velocity (ft/s)- Winter Flow	14

## Table of Contents- Tucannon Big Four Hydraulic Modeling Analysis

<b>Figure List</b>	<b>Page</b>
Existing Conditions Velocity (ft/s)- 2 Year Flow (from Anchor report)	15
Proposed Conditions Velocity (ft/s)- 2 Year Flow (from Anchor report)	16
Existing Conditions Velocity (ft/s)- 2 Year Flow (from Streamstats)	17
Proposed Conditions Velocity (ft/s)- 2 Year Flow (from Streamstats)	18
Existing Conditions Velocity (ft/s)- 25 Year Flow	19
Proposed Conditions Velocity (ft/s)- 25 Year Flow	20
Existing Conditions Velocity (ft/s)- 100 Year Flow	21
Proposed Conditions Velocity (ft/s)- 100 Year Flow	22
Existing Conditions Velocity (ft/s) - 25 Year Flow (u/s extent)	23
Proposed Conditions Velocity (ft/s) - 25 Year Flow (u/s extent)	24

Existing Summer Flow  
Proposed Summer Flow

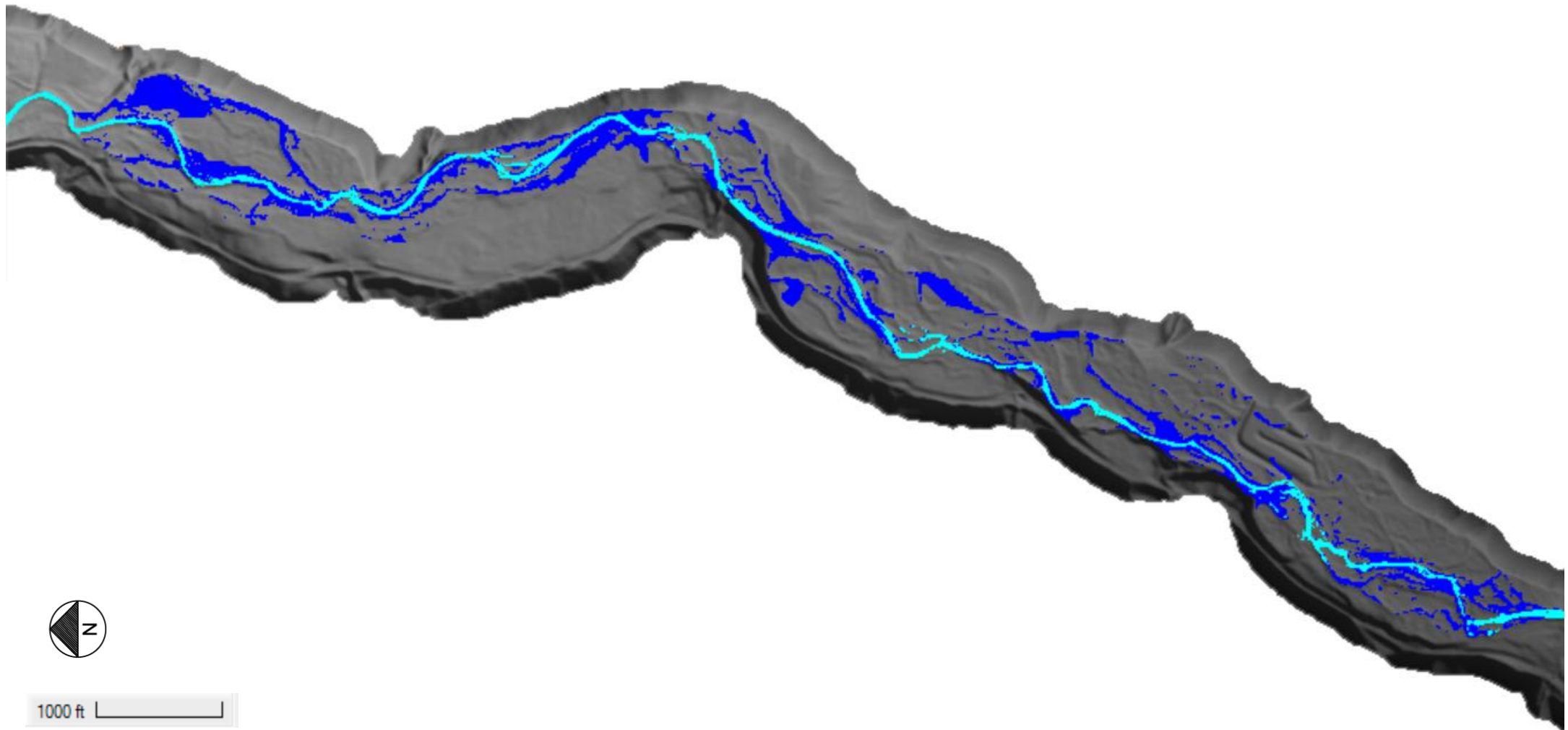


Figure 1. Comparison Between Existing and Proposed Conditions Depth (feet)- Summer Flow 68 cfs

Existing Winter Flow  
Proposed Winter Flow

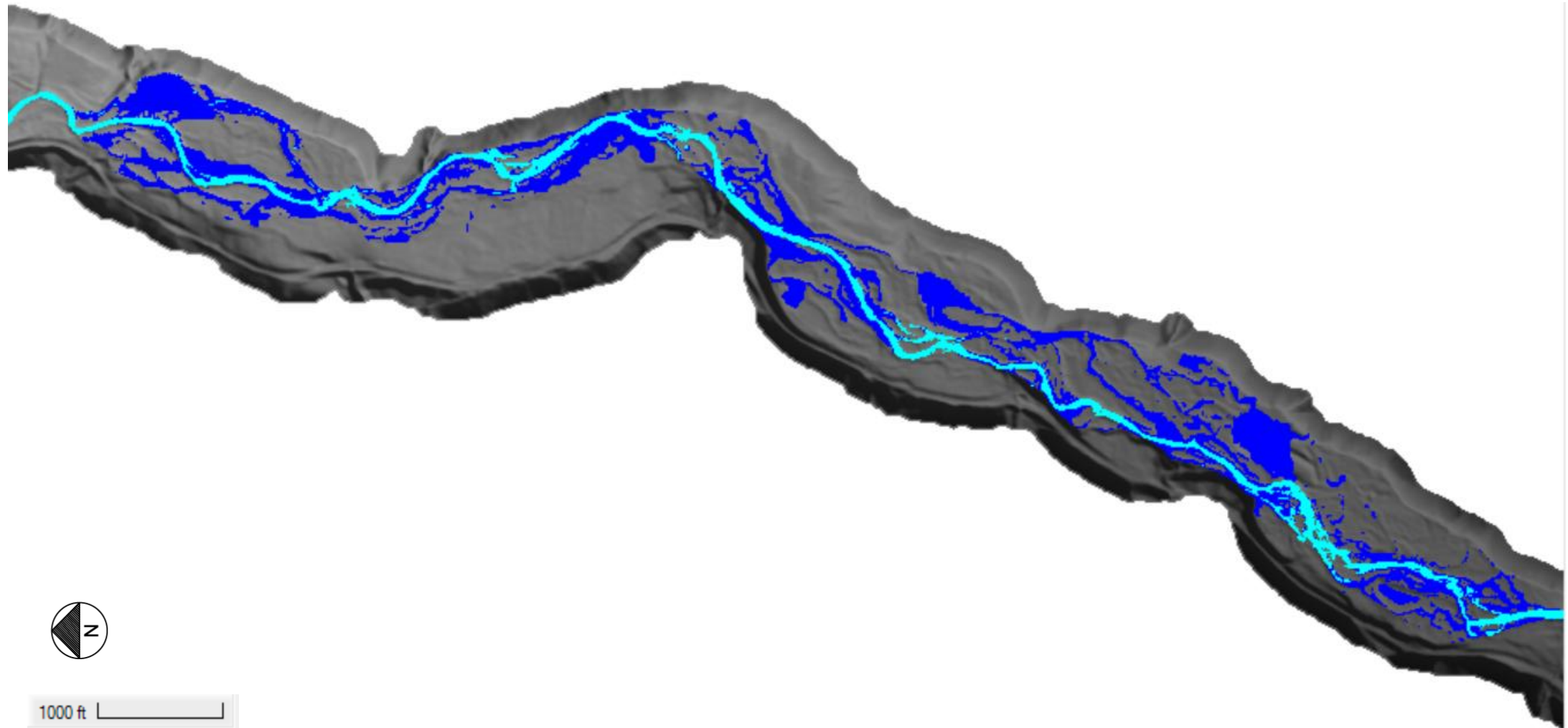


Figure 2. Comparison Between Existing and Proposed Conditions Depth (feet)- Winter Flow 174 cfs

Existing 2 Year Flow  
Proposed 2 Year Flow

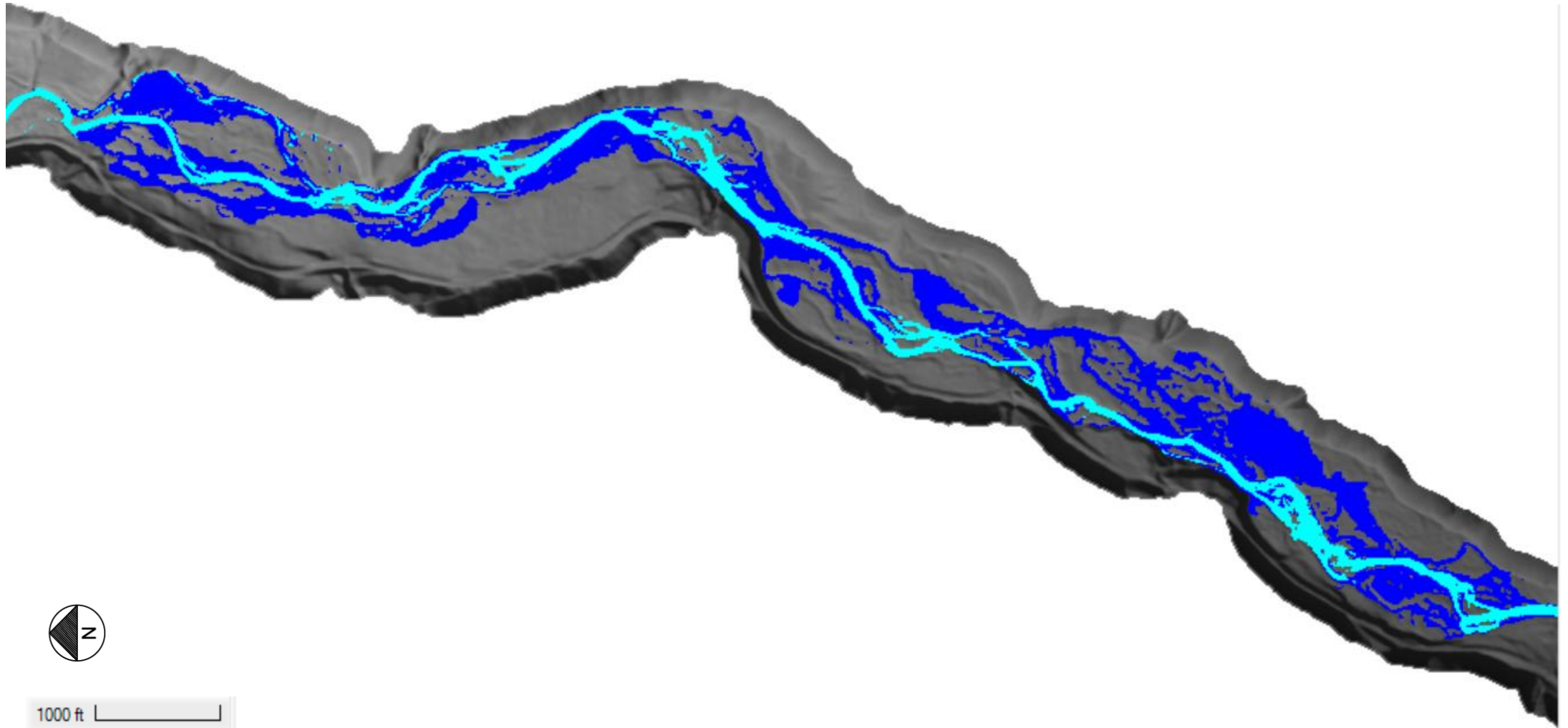


Figure 3. Comparison Between Existing and Proposed Conditions Depth (feet)- 2 Year Flow (from Anchor report) 425 cfs

Existing 2 Year Flow  
Proposed 2 Year Flow

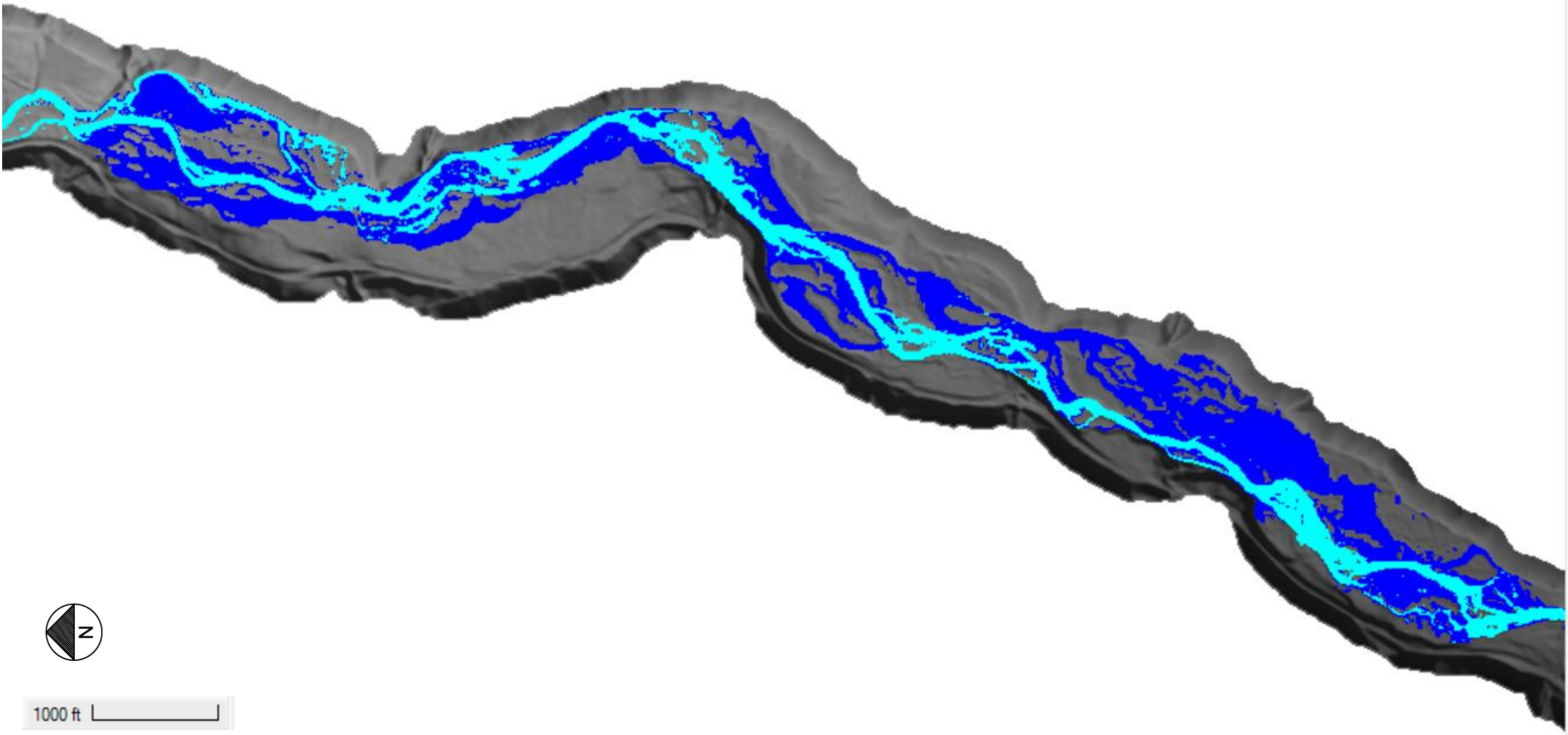


Figure 4. Comparison Between Existing and Proposed Conditions Depth (feet)- 2 Year Flow (from Streamstats)  
784 cfs

Existing 25 Year Flow  
Proposed 25 Year Flow

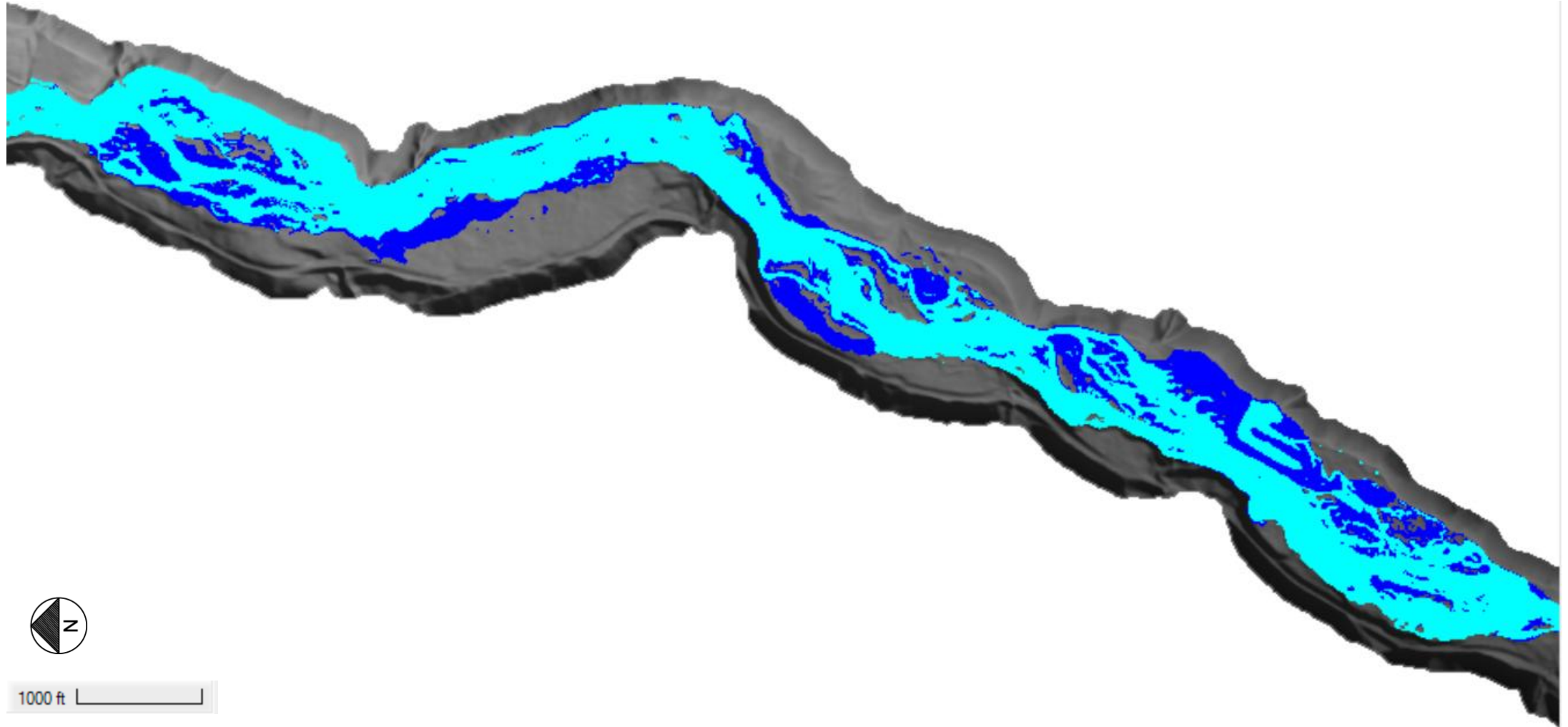


Figure 5. Comparison Between Existing and Proposed Conditions Depth (feet)- 25 Year Flow 3,627 cfs

Existing 100 Year Flow  
Proposed 100 Year Flow

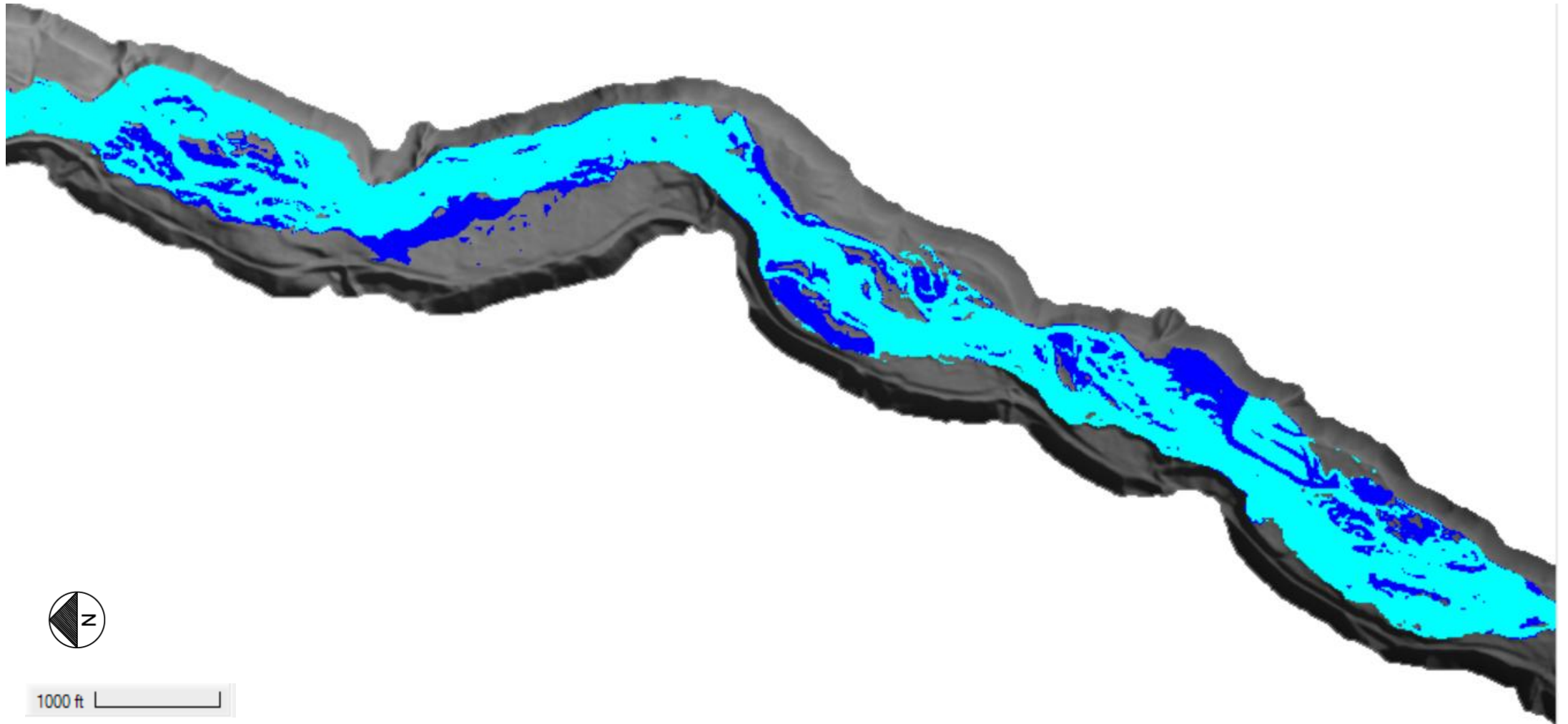


Figure 6. Comparison Between Existing and Proposed Conditions Depth (feet)- 100 Year Flow 4,160 cfs

Figure 7. Existing Conditions  
Depth (ft) - 25 Year Flow 3,627 cfs

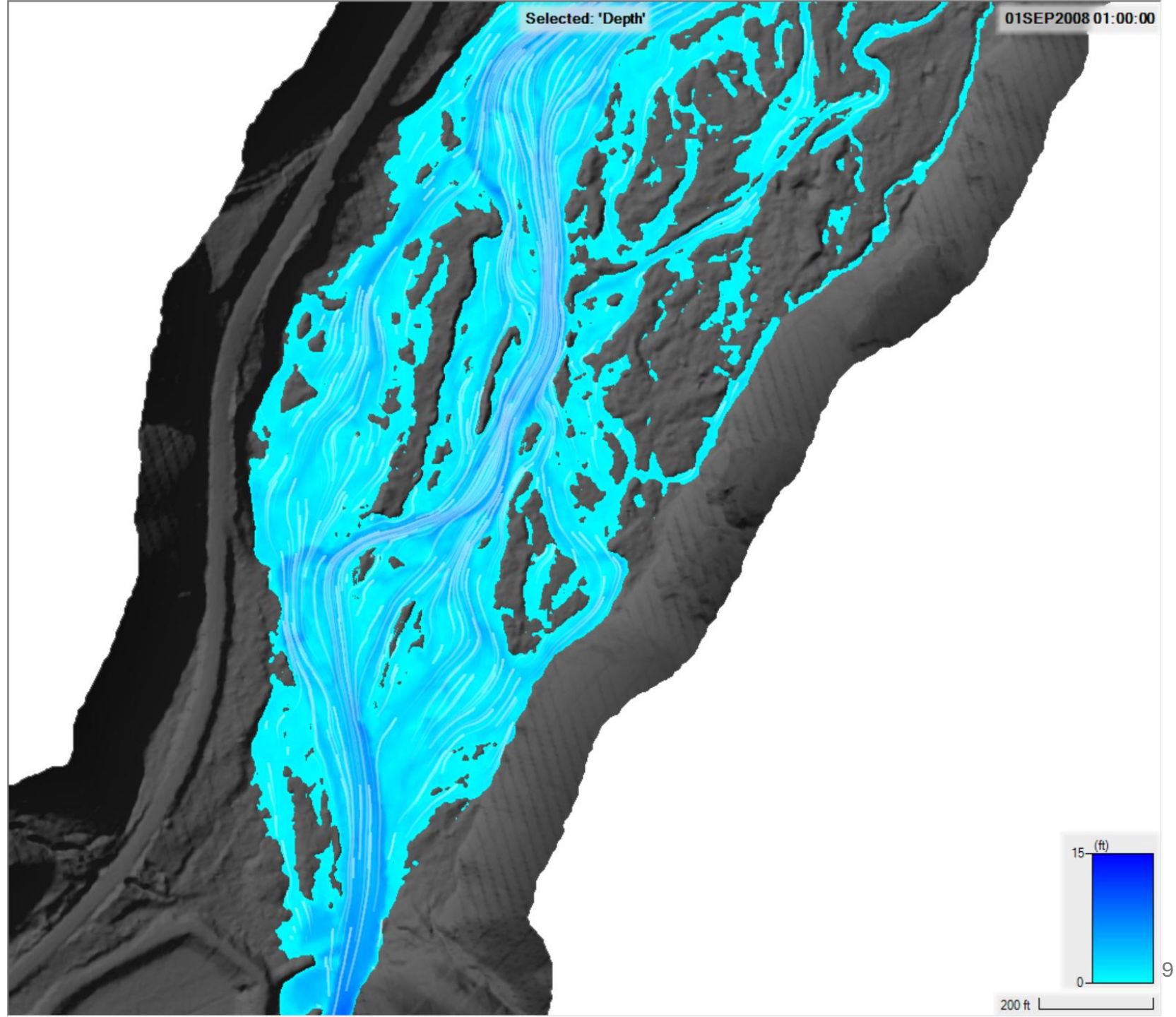
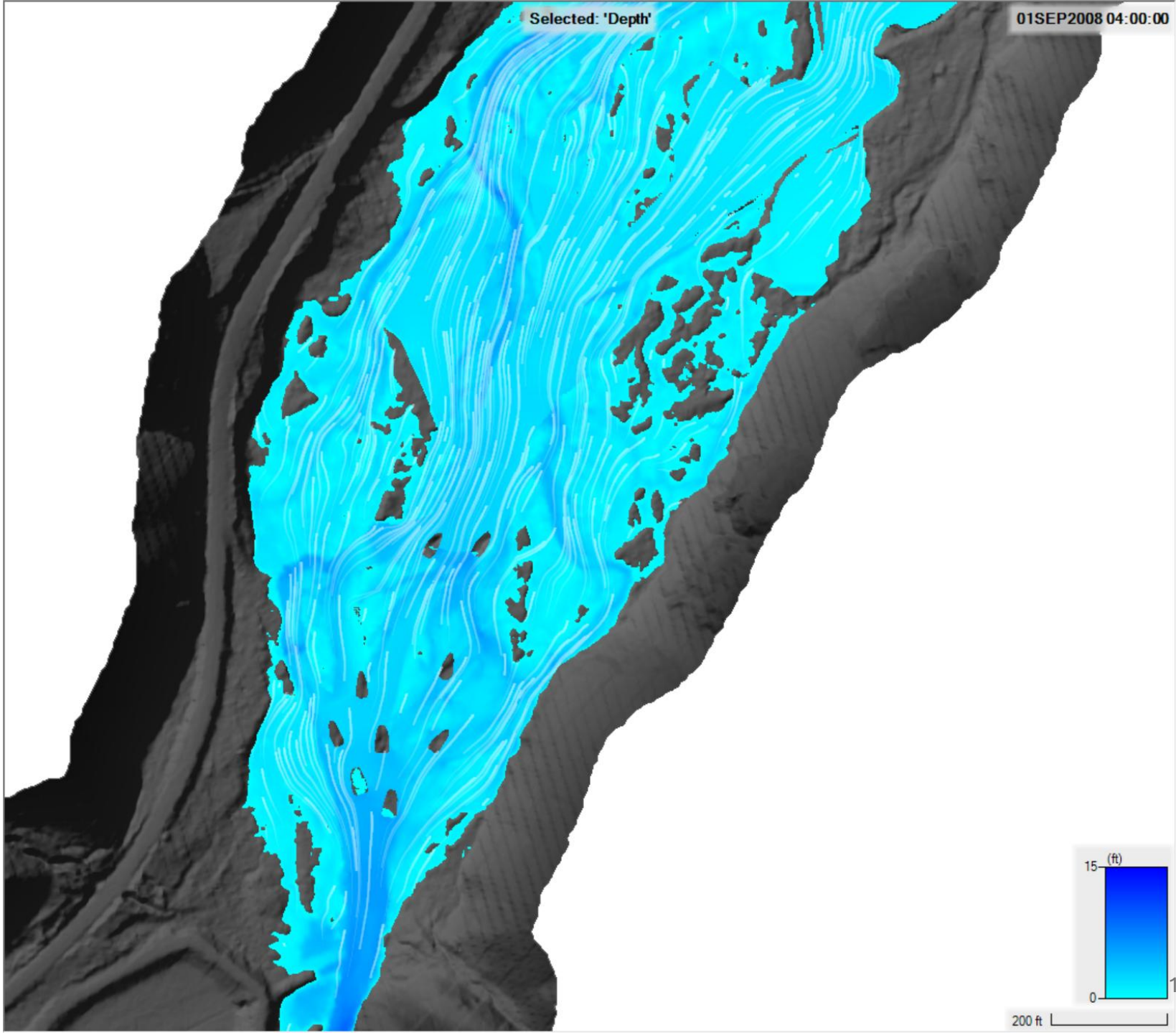


Figure 8. Proposed Conditions  
Depth (ft) - 25 Year Flow 3,627 cfs



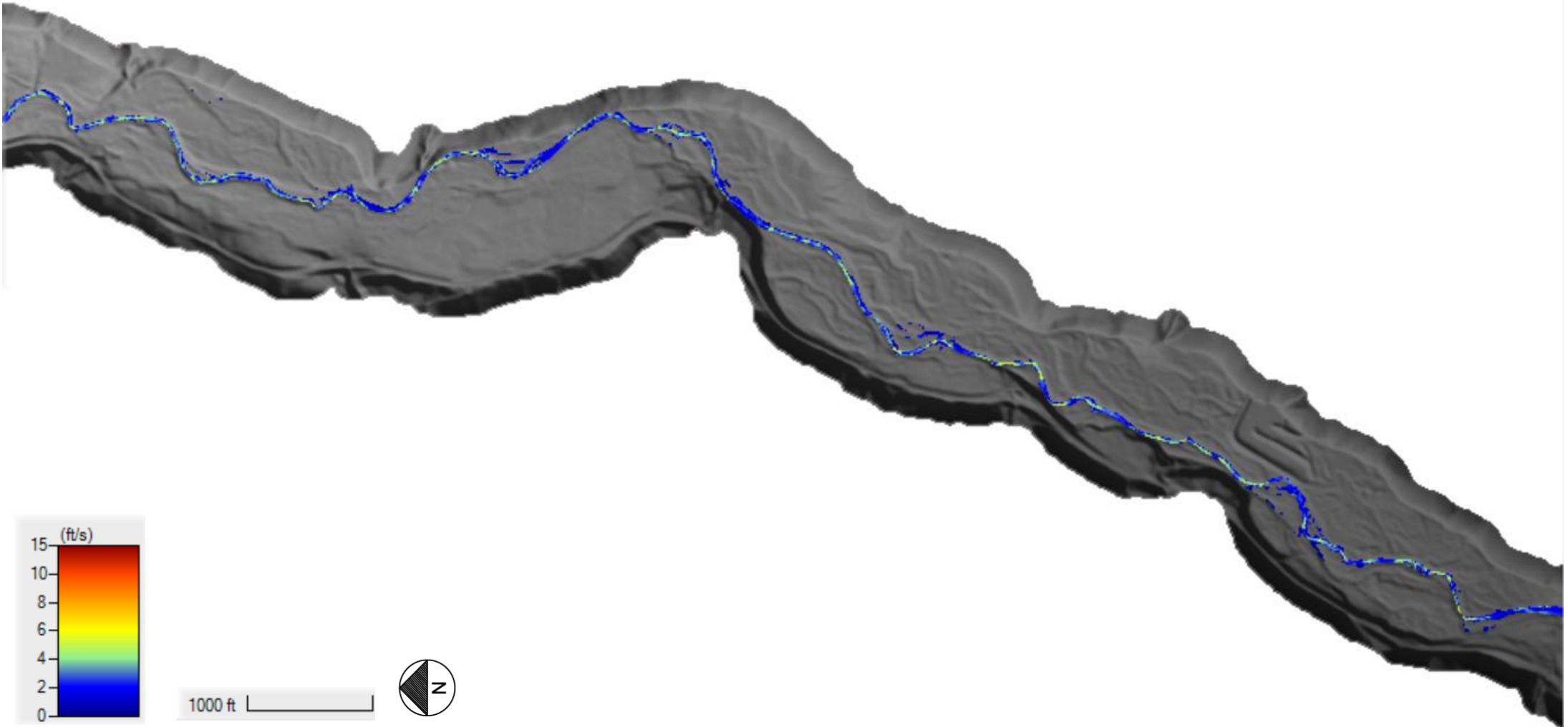


Figure 9. Existing Conditions Velocity (ft/s)- Summer Flow (68 cfs)

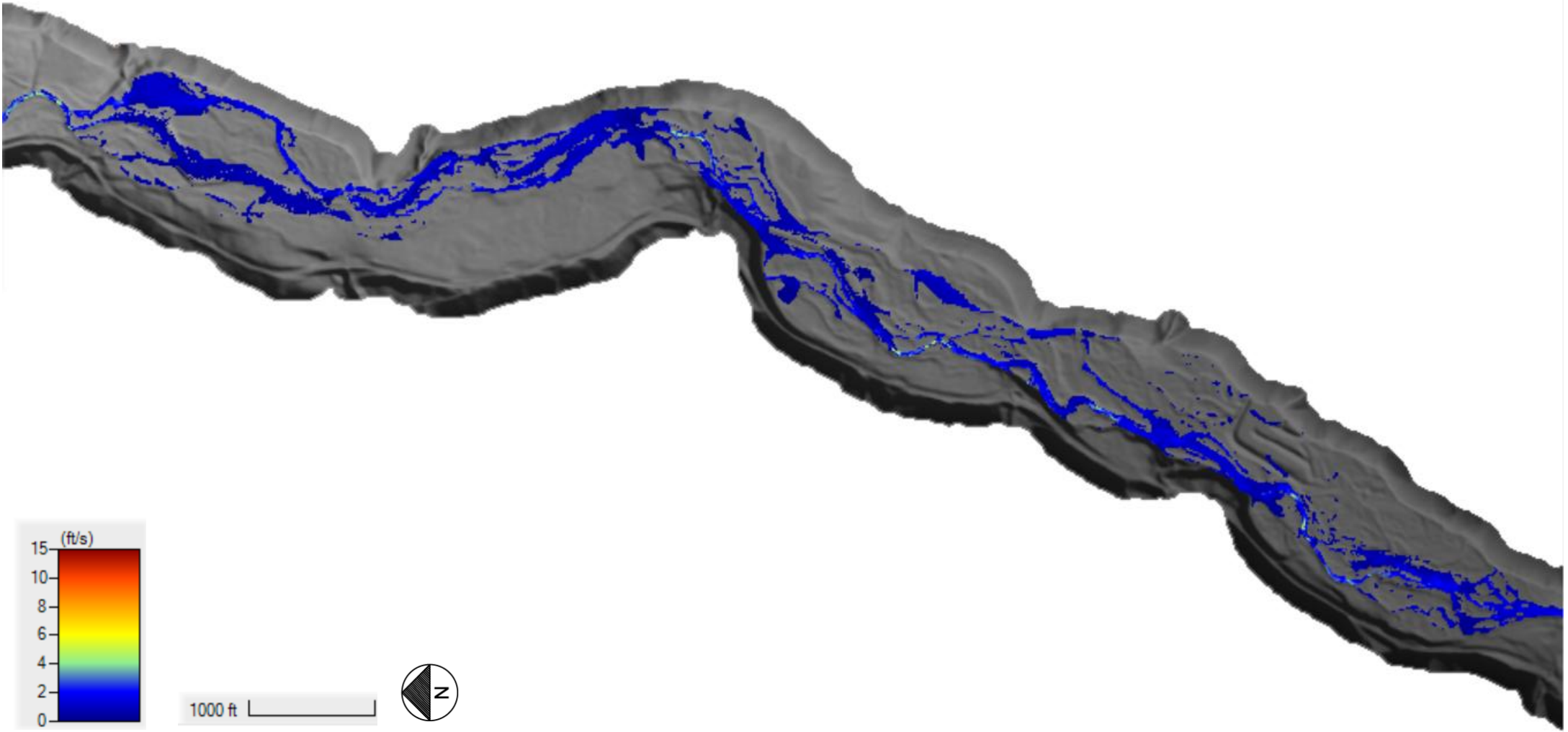


Figure 10. Proposed Conditions Velocity (ft/s)- Summer Flow (68 cfs)

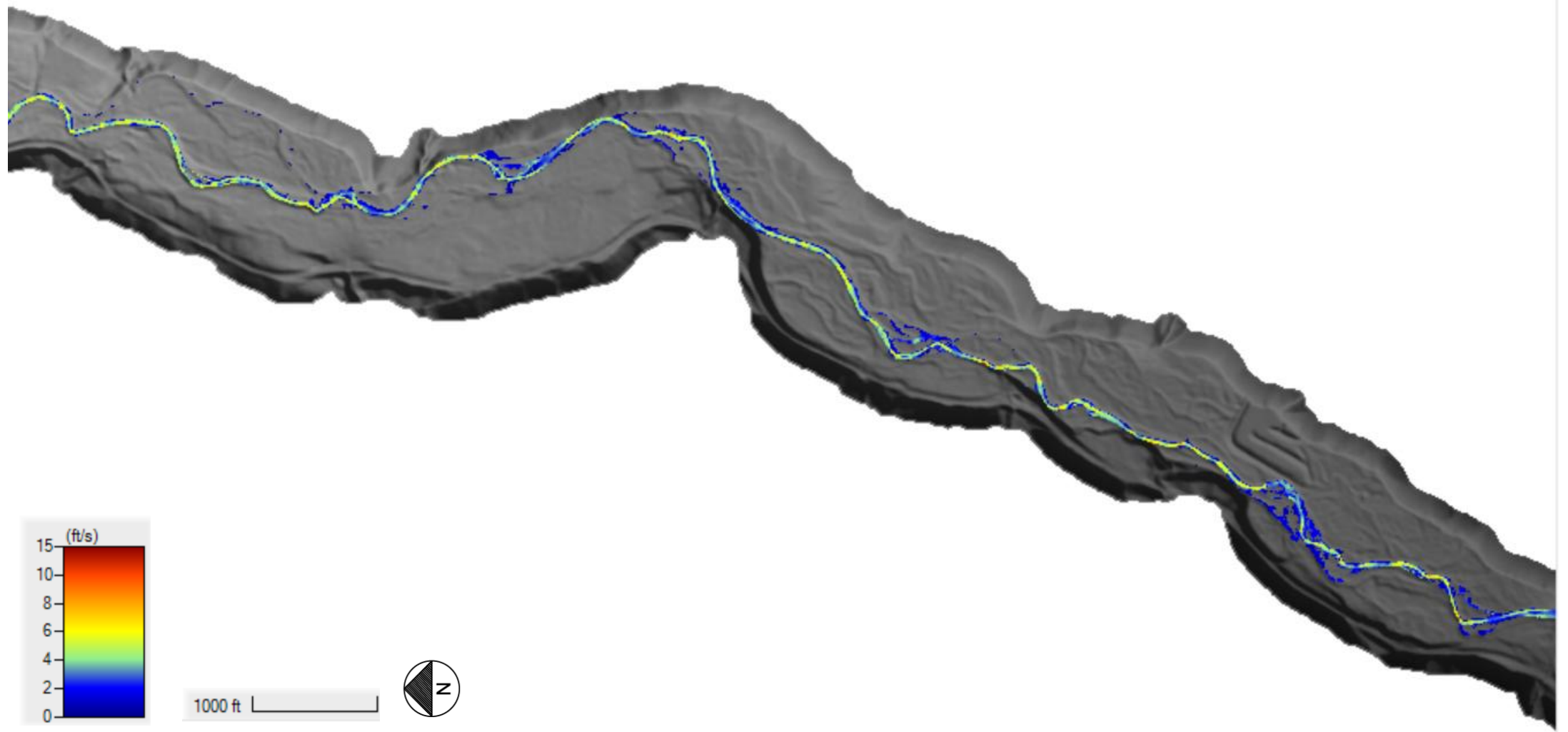


Figure 11. Existing Conditions Velocity (ft/s)- Winter Flow (174 cfs)

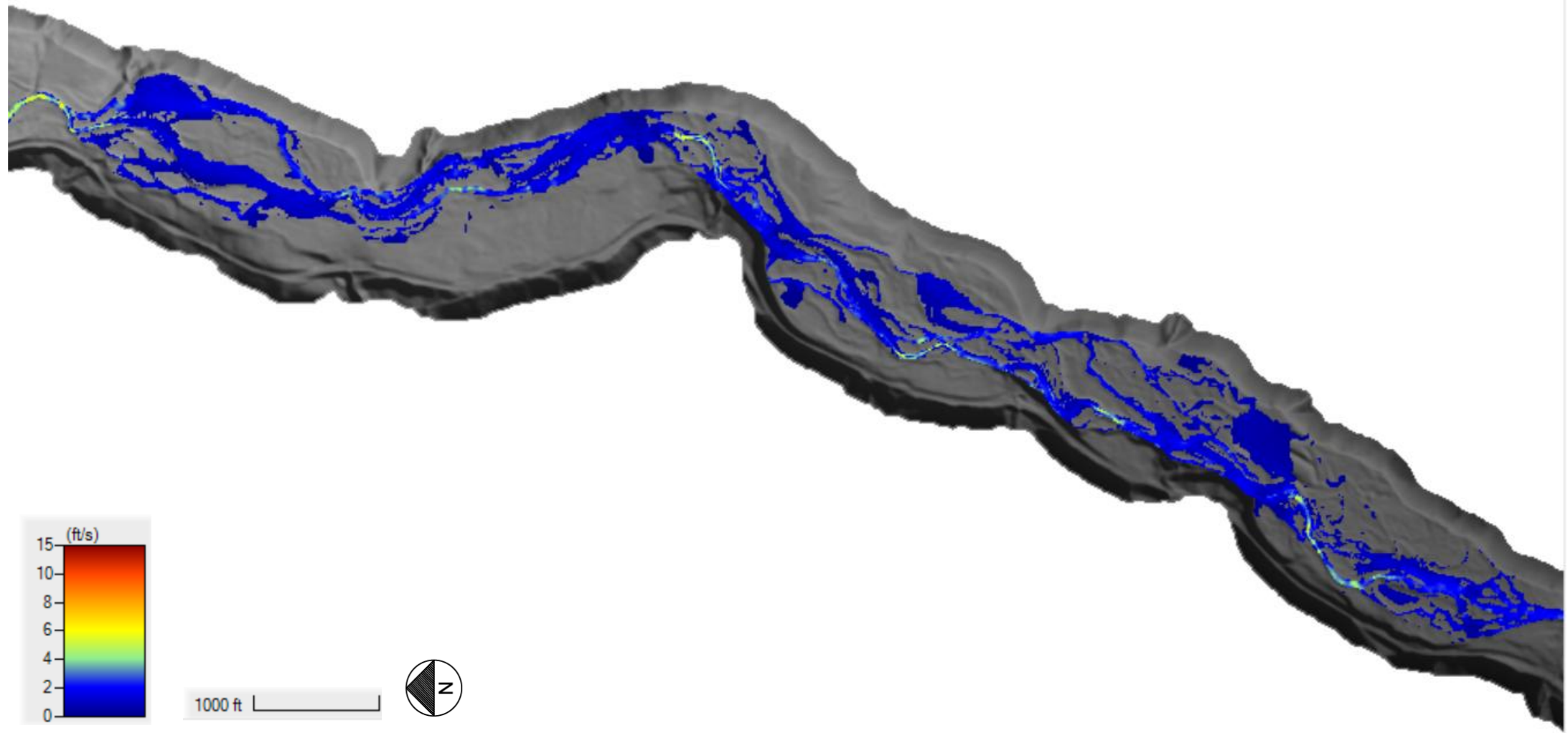


Figure 12. Proposed Conditions Velocity (ft/s)- Winter Flow (174 cfs)

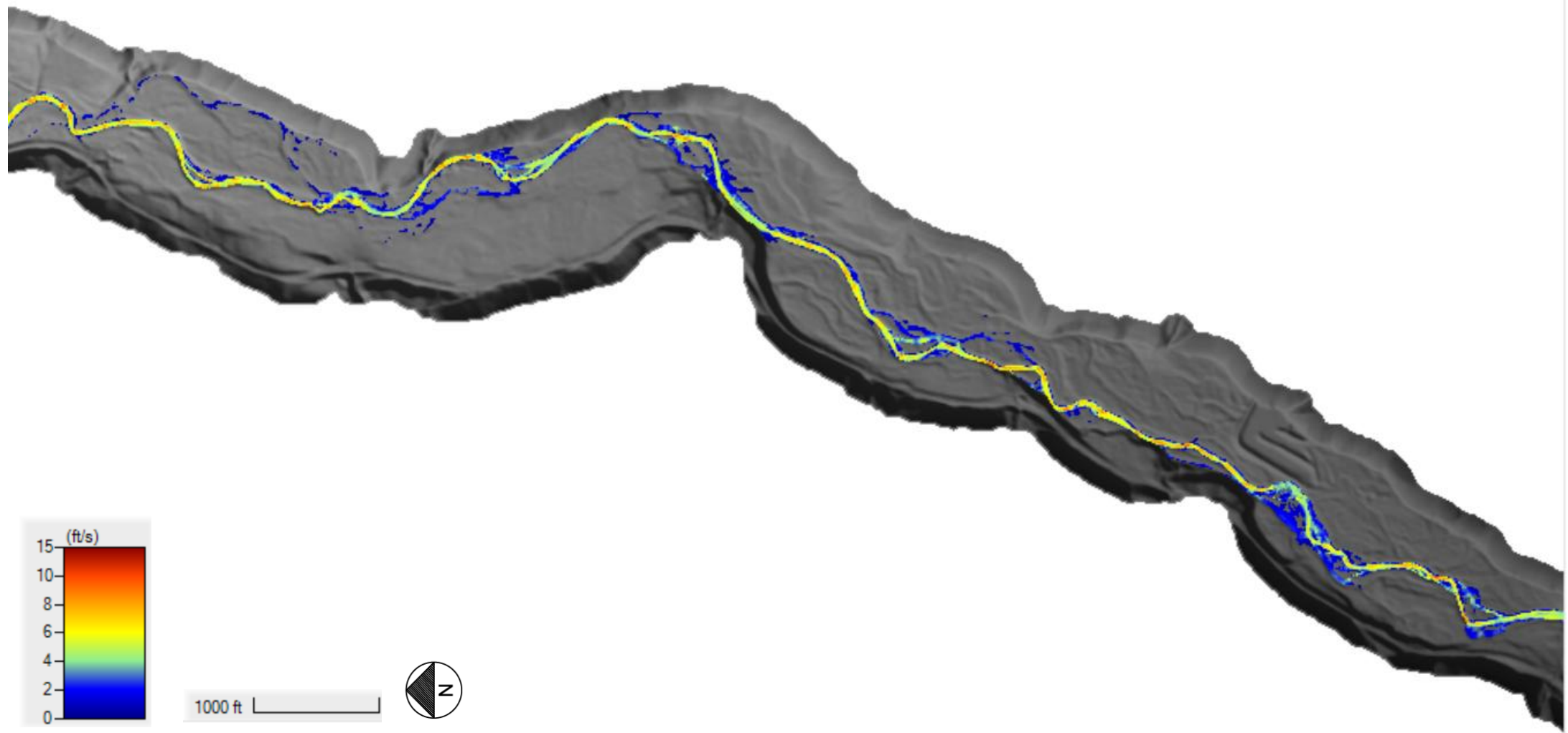


Figure 13. Existing Conditions Velocity (ft/s)- 2 Year Flow (from Anchor report) 425 cfs

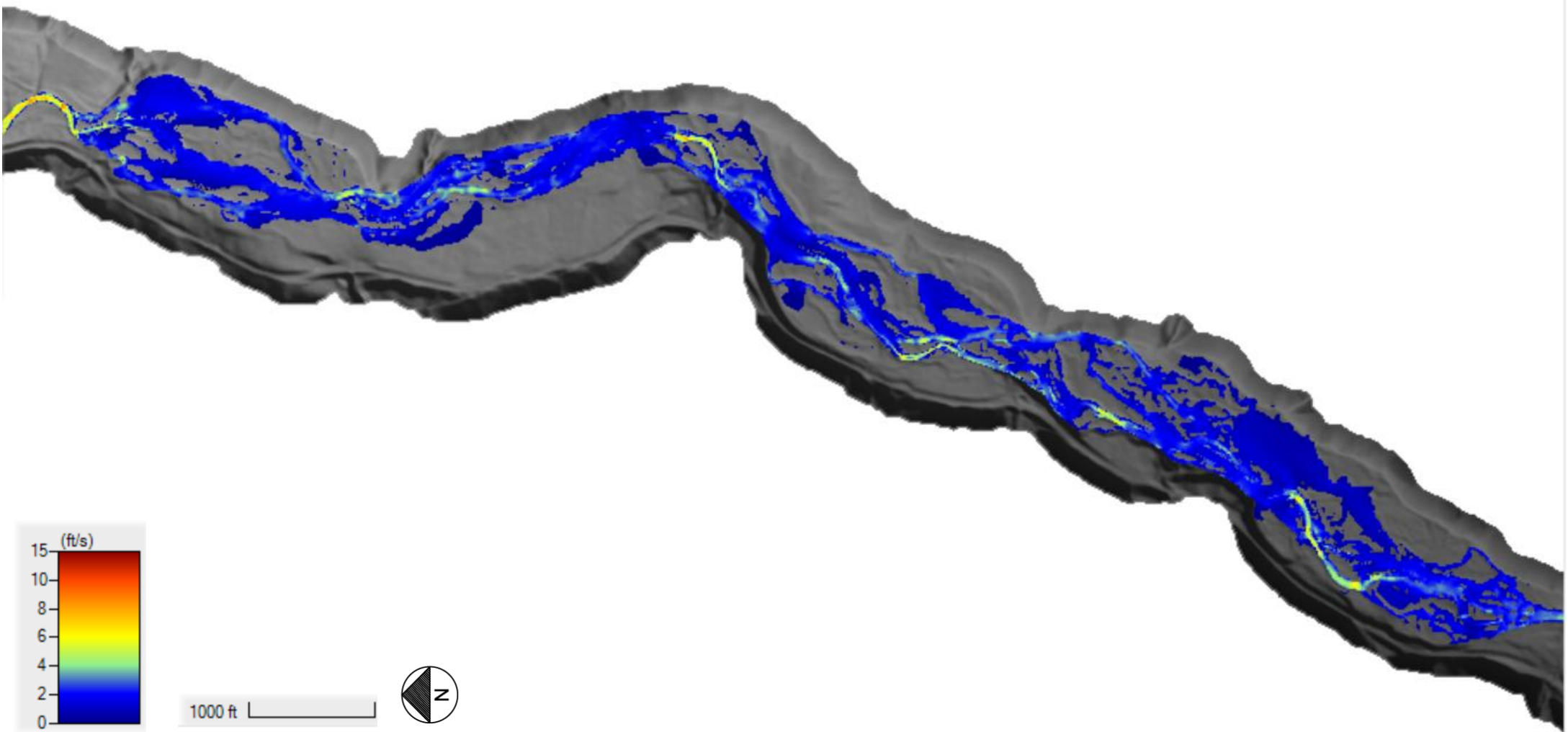


Figure 14. Proposed Conditions Velocity (ft/s)- 2 Year Flow (from Anchor report) 425 cfs

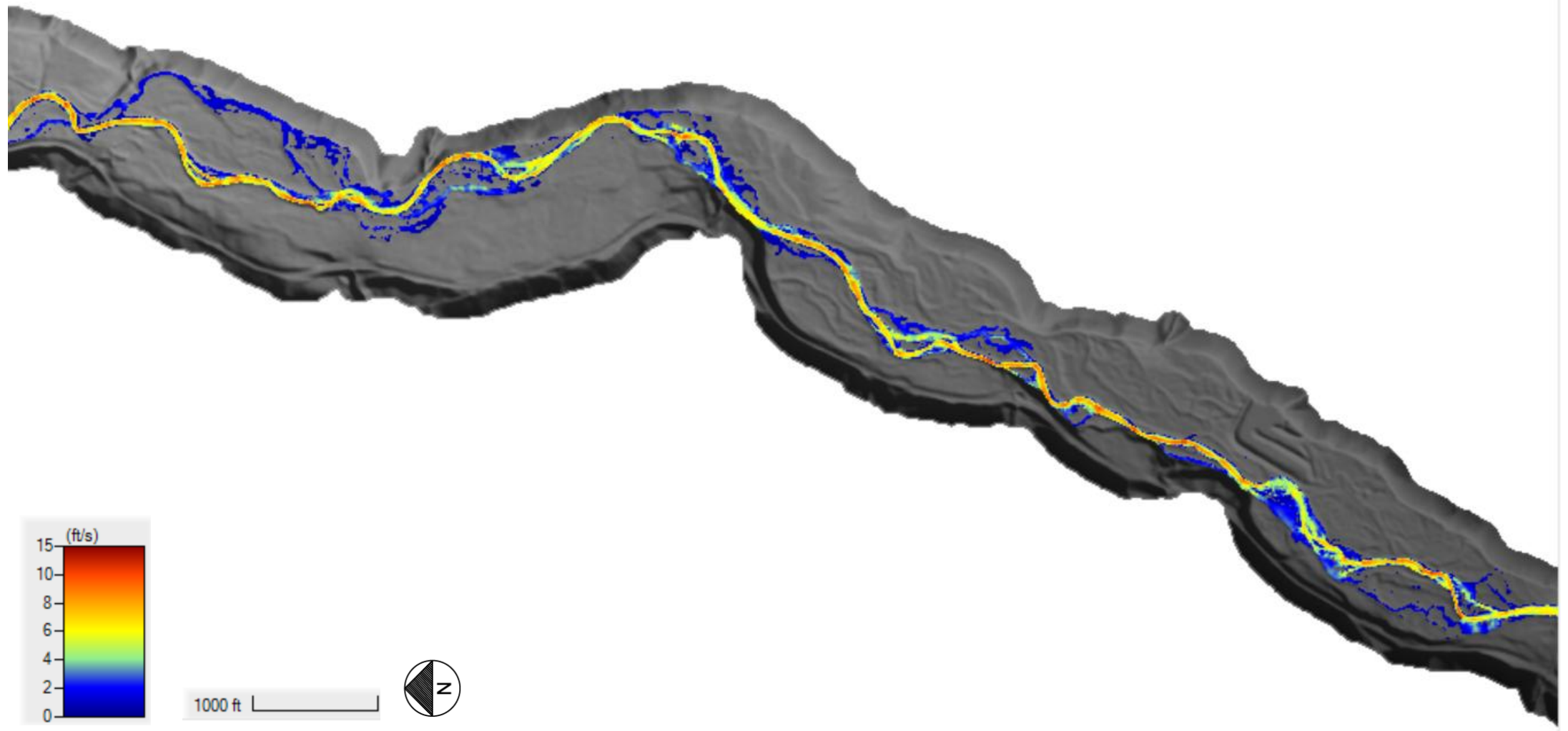


Figure 15. Existing Conditions Velocity (ft/s)- 2 Year Flow (from Streamstats) 784 cfs

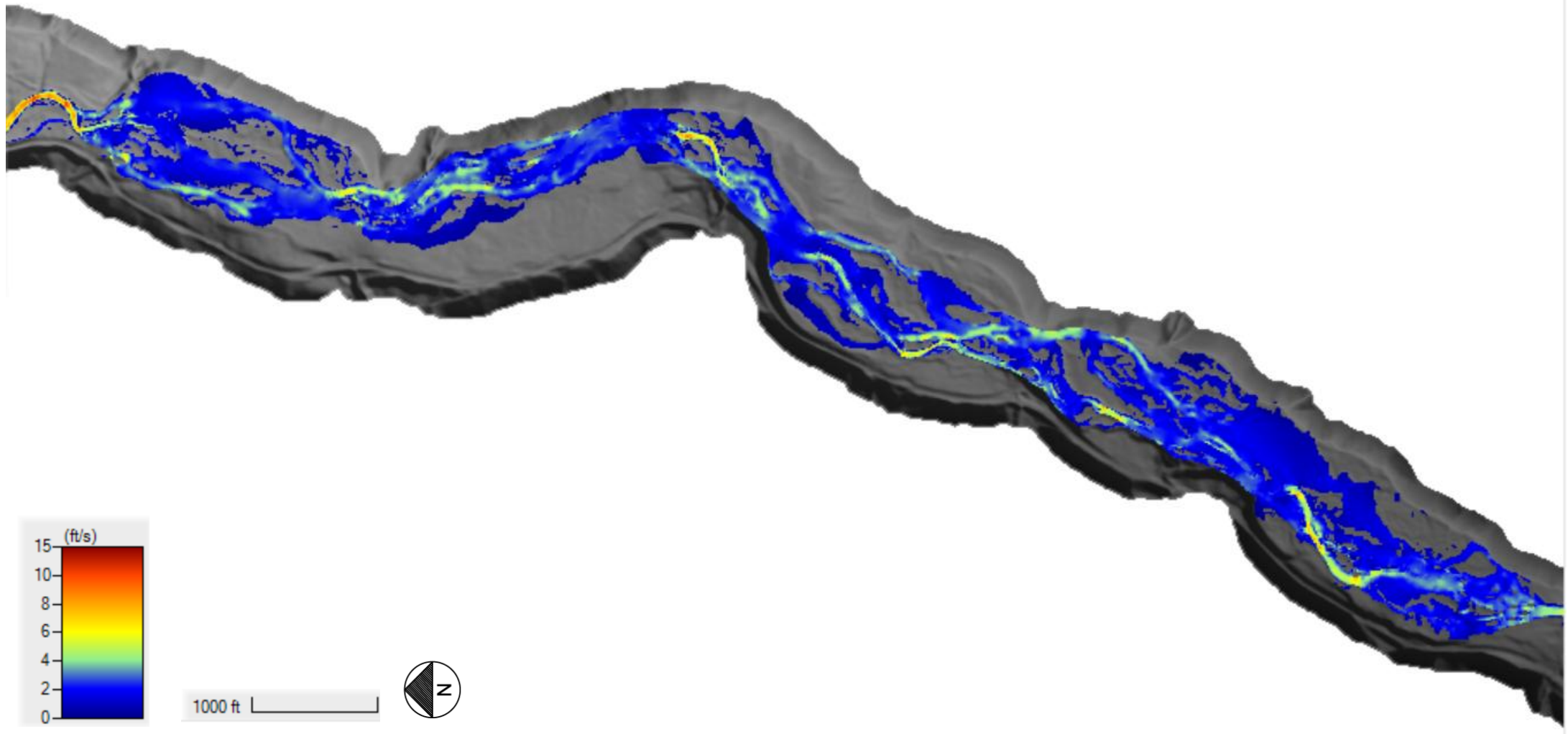


Figure 16. Proposed Conditions Velocity (ft/s)- 2 Year Flow (from Streamstats) 784 cfs

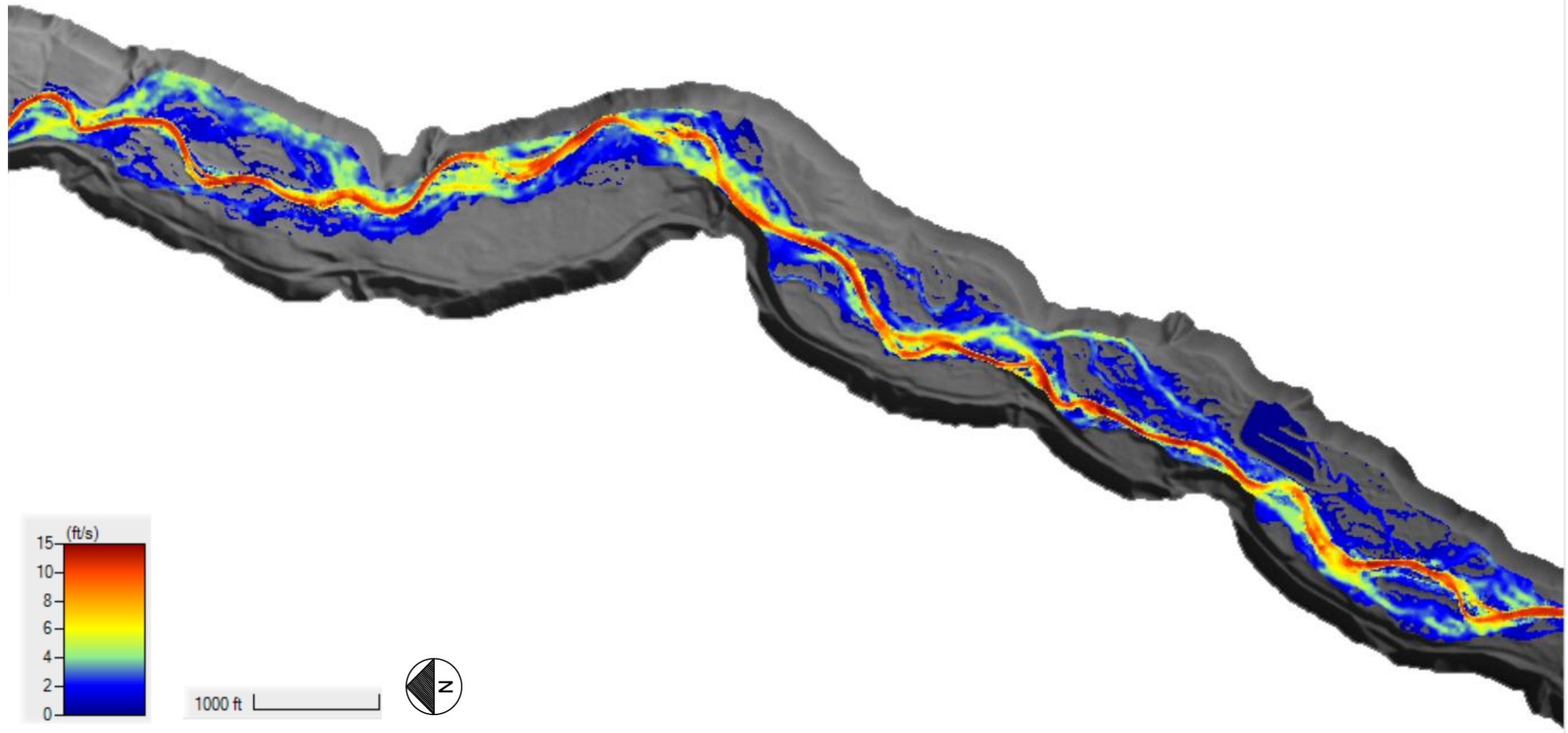


Figure 17. Existing Conditions Velocity (ft/s)- 25 Year Flow 3,627 cfs

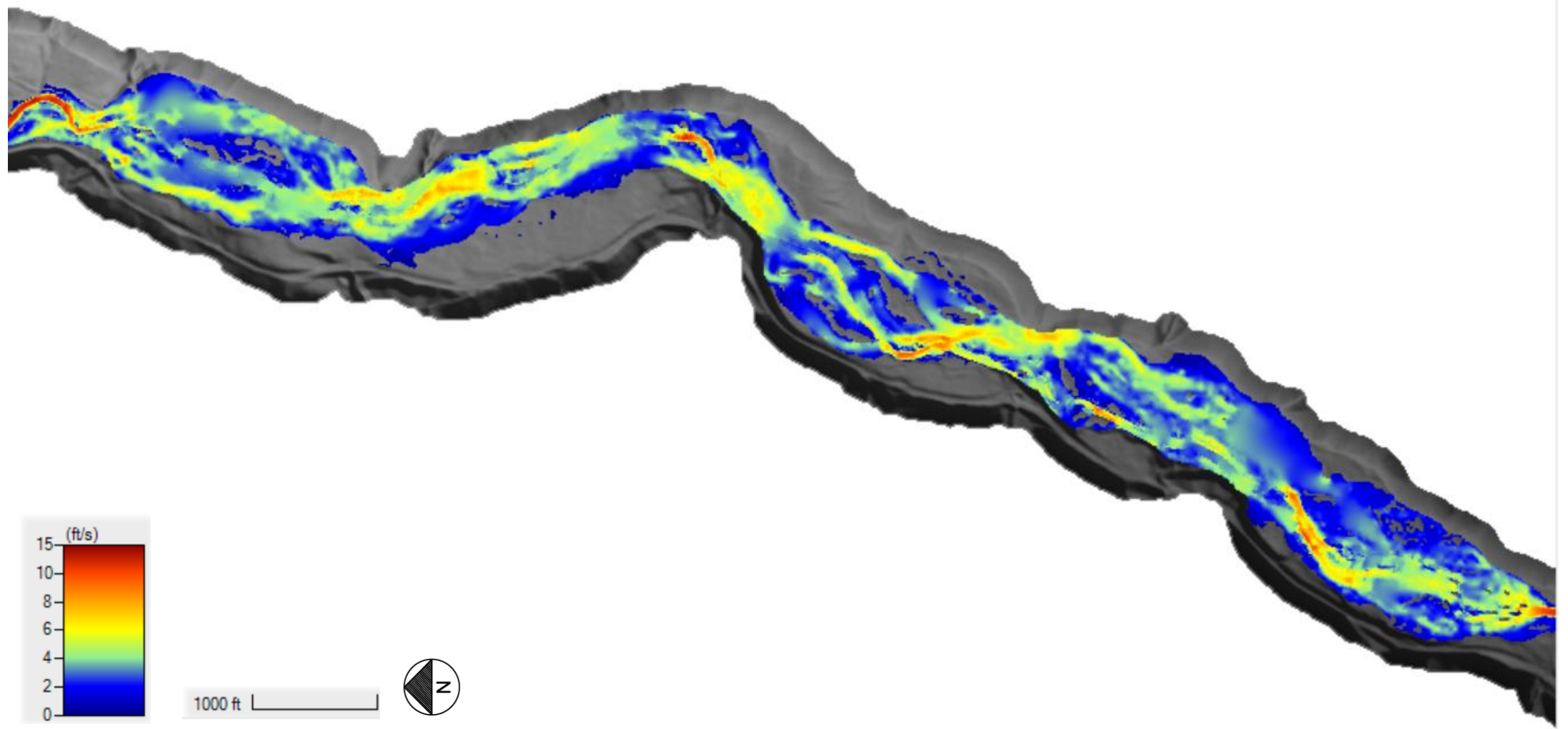


Figure 18. Proposed Conditions Velocity (ft/s)- 25 Year Flow 3,627 cfs

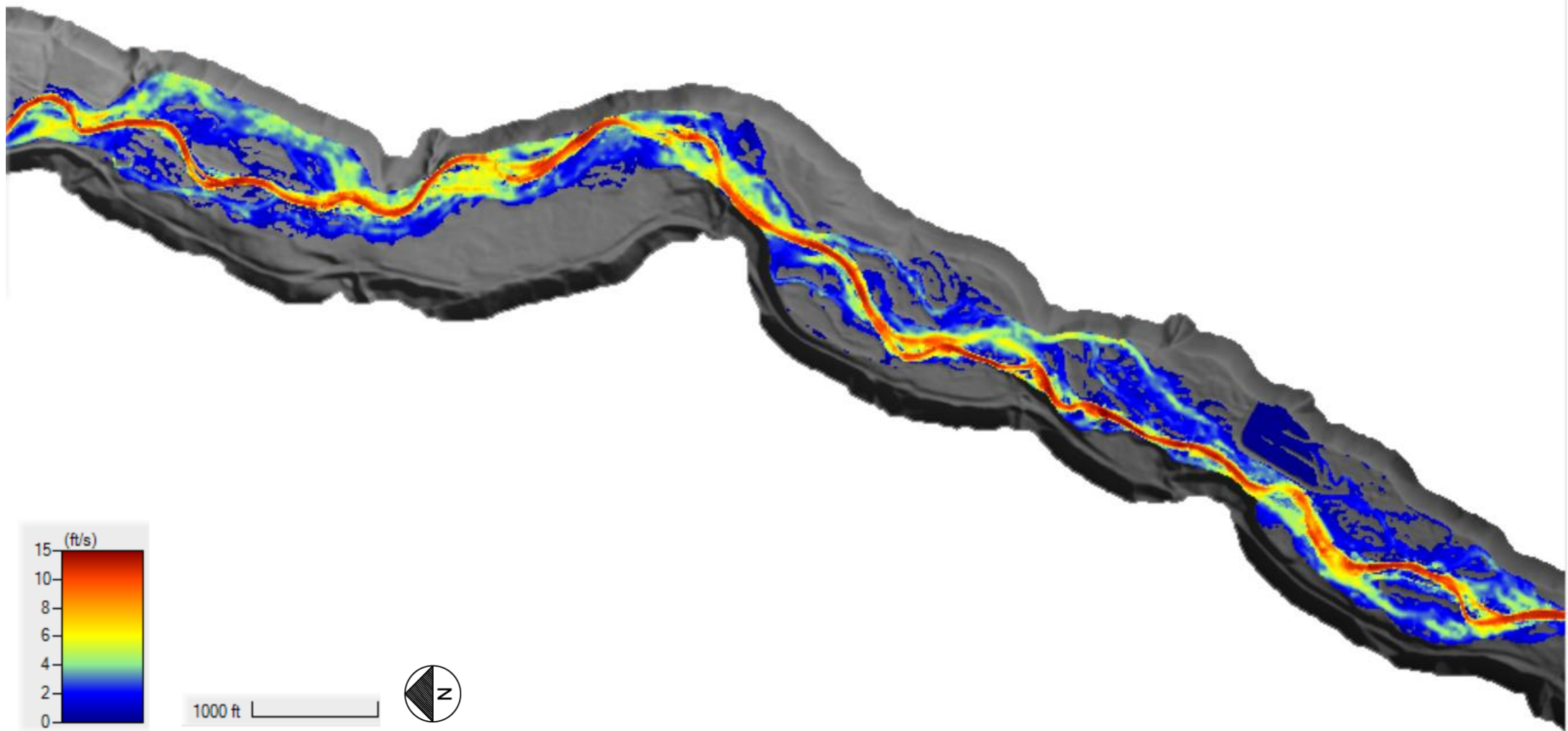


Figure 19. Existing Conditions Velocity (ft/s)- 100 Year Flow 4160 cfs

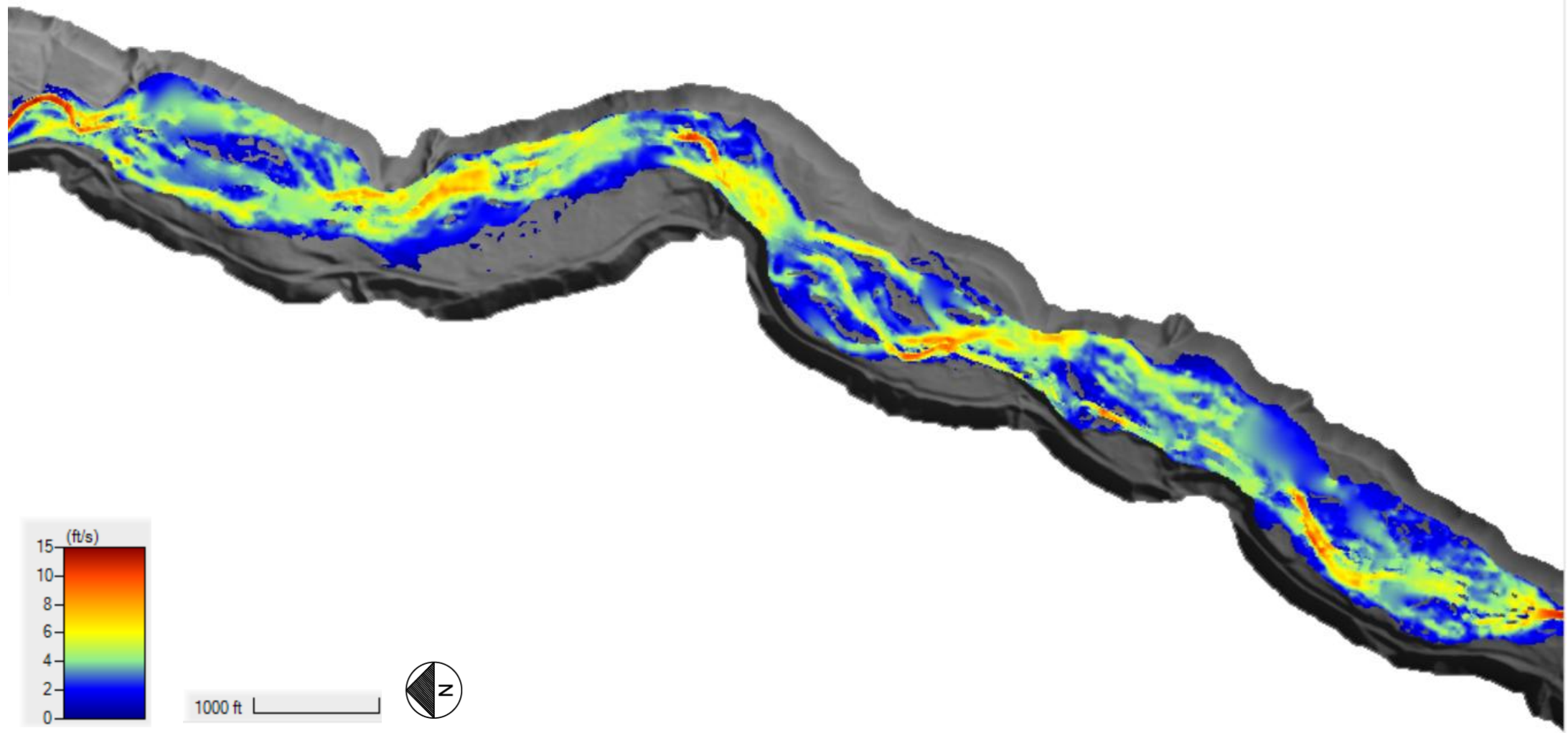


Figure 20. Proposed Conditions Velocity (ft/s)- 100 Year Flow 4,160 cfs

Figure 21. Existing Conditions  
Velocity (ft/s) - 25 Year Flow  
3,627 cfs

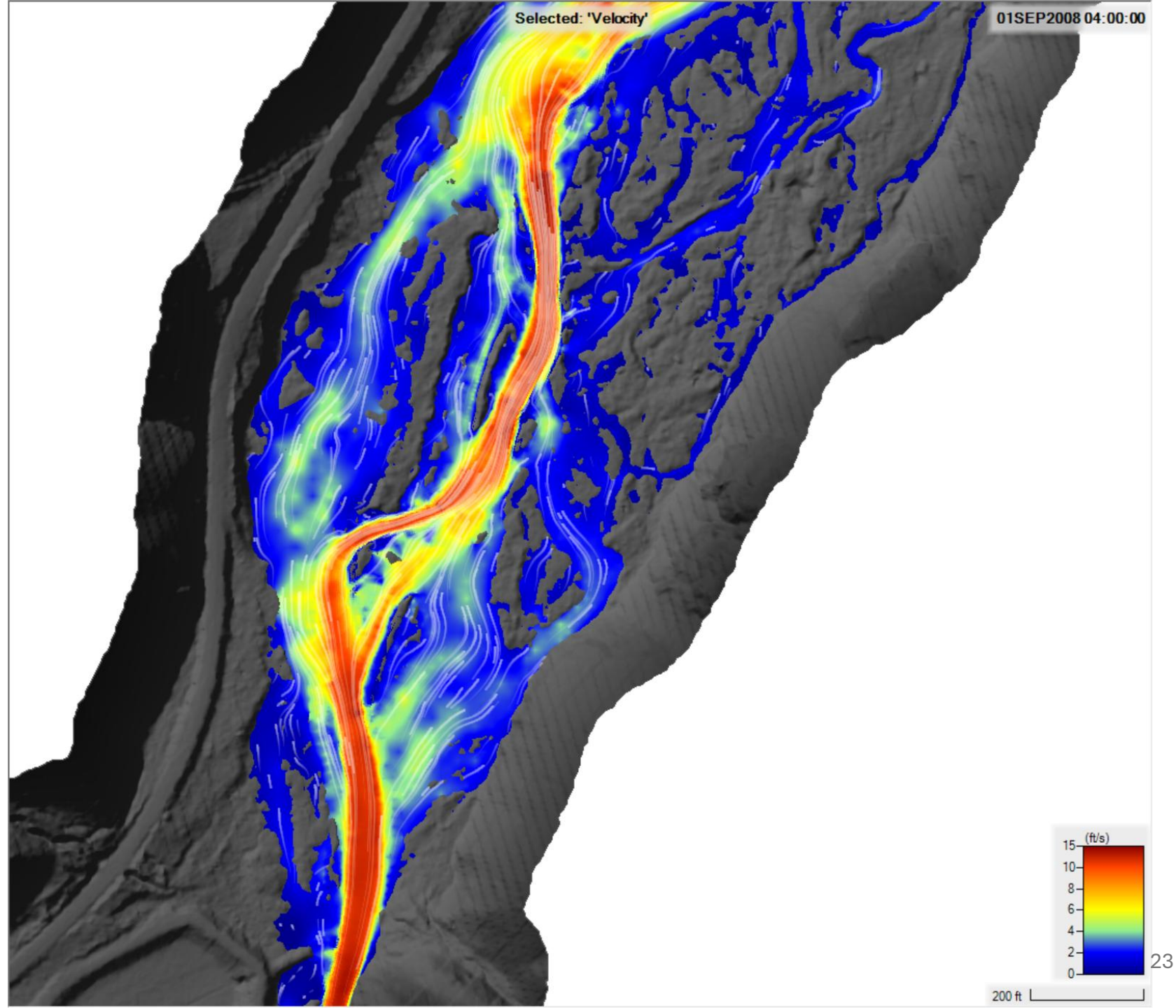


Figure 22. Proposed Conditions  
Velocity (ft/s) - 25 Year Flow  
3,627 cfs

